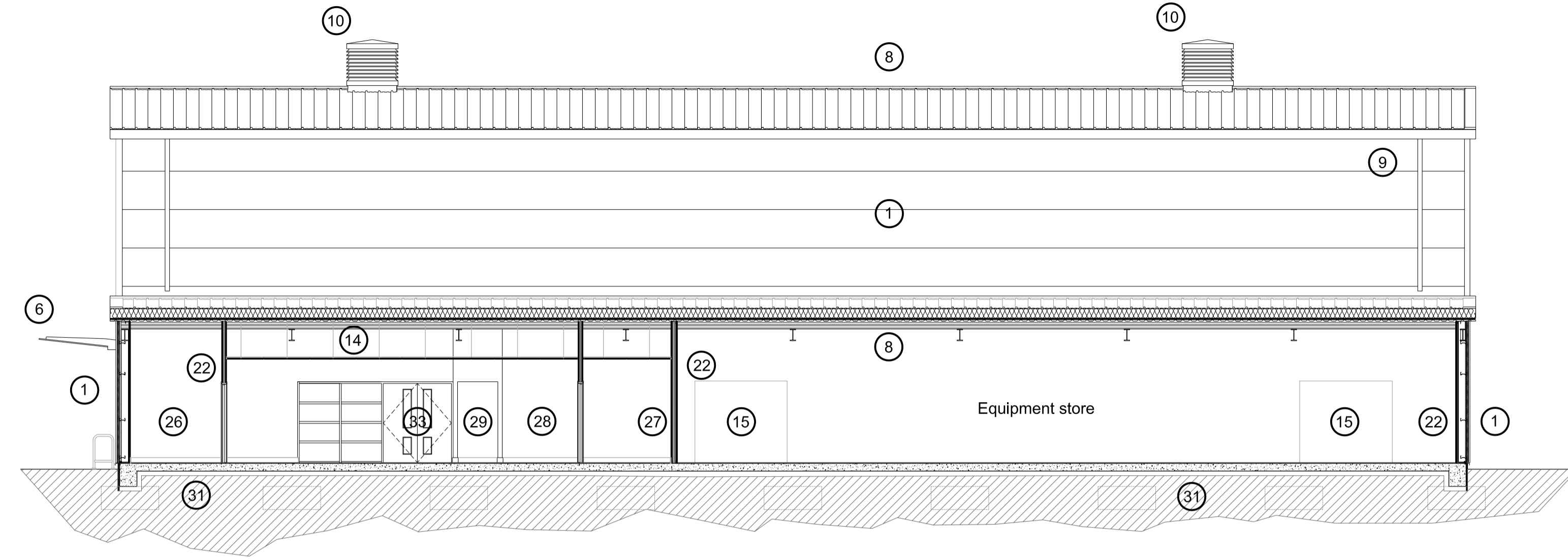
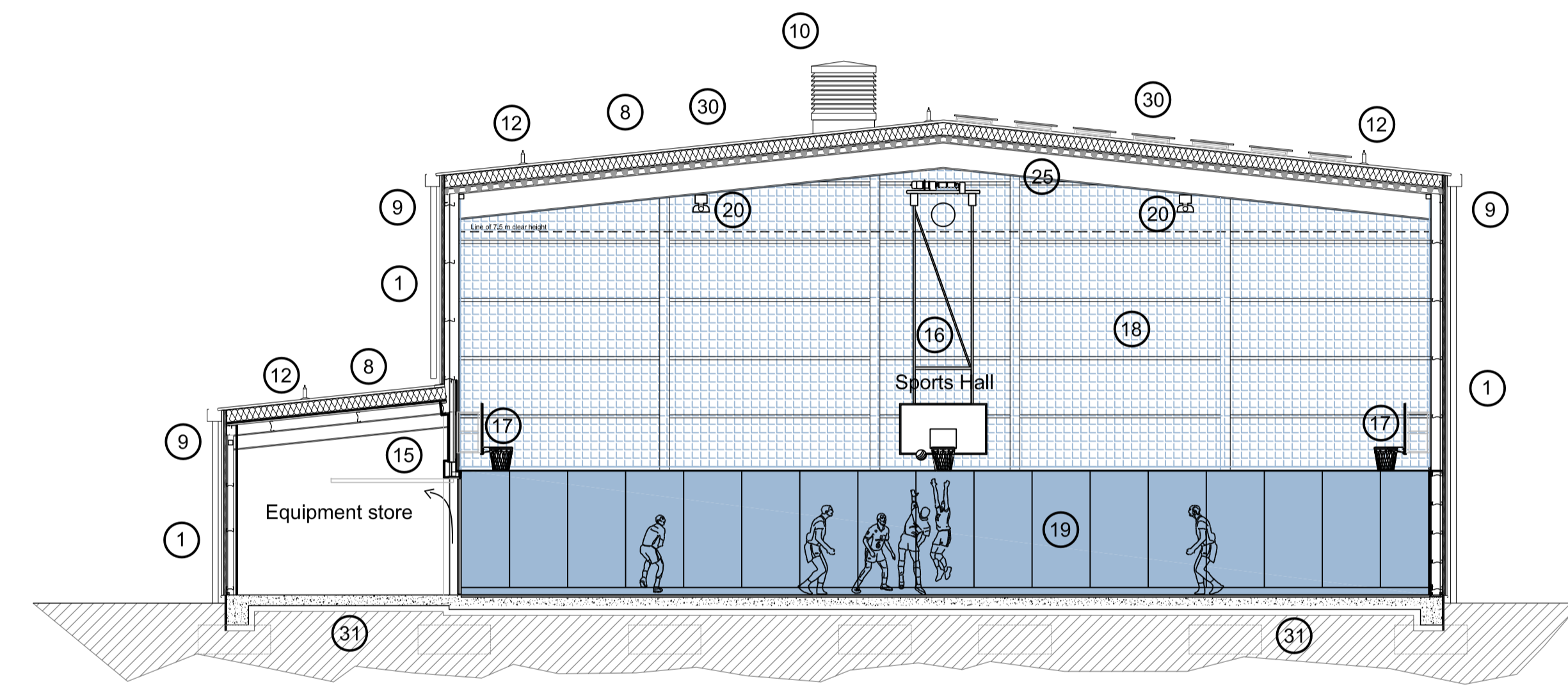


KEY

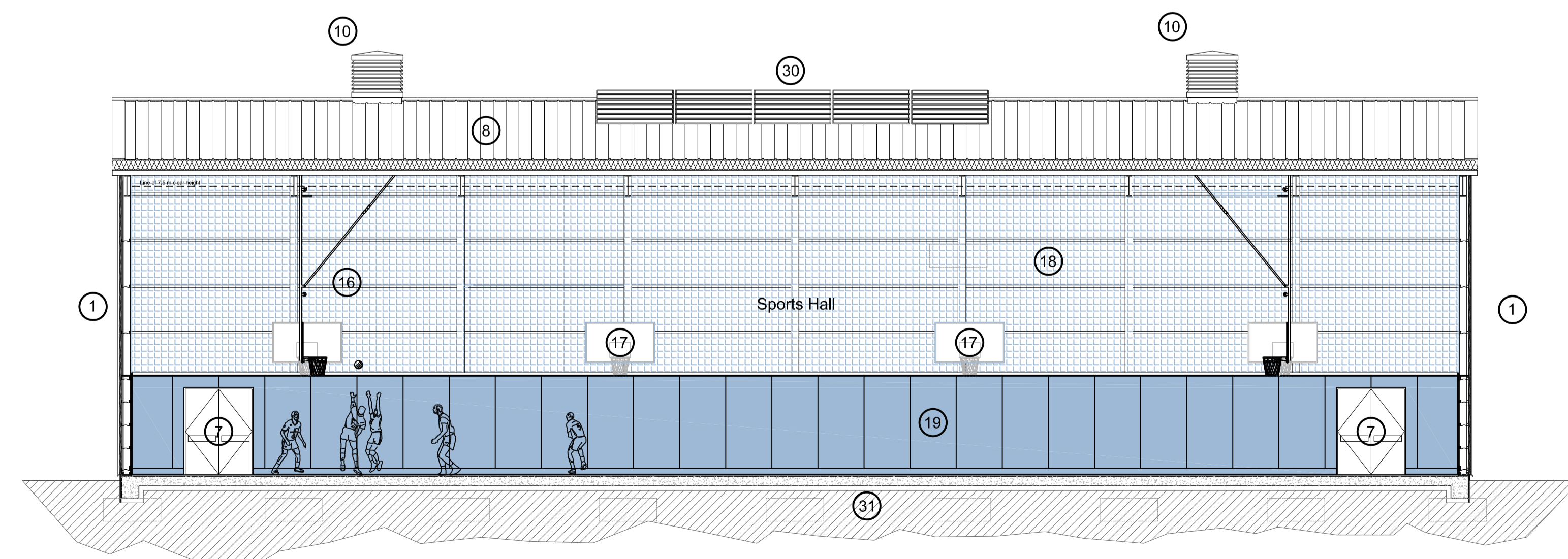
- ① Profiled steel insulated composite cladding panel
- ② Powder coated aluminium curtain walling
- ③ Internal glazed screen and door into sports hall - flush faced and impact resistant
- ④ Acoustic suspended ceiling system
- ⑤ Steel cell beam roof structure forming part of a braced frame
- ⑥ Glazed canopy over entrance
- ⑦ Metal escape door flush faced with rebound boards
- ⑧ Profiled metal built up roofing system
- ⑨ Metal guttering and rainwater pipework
- ⑩ Natural ventilation roof cowl
- ⑪ Roof mounted fall restraint system
- ⑫ Roof mounted photo-voltaic panels
- ⑬ Severe duty drywall partitions with plywood sheathing.
- ⑭ Acoustic suspended ceiling system
- ⑮ Up-and-over Equipment Store door 2.4 x 2.4m
- ⑯ FR grade laminate faced FR WB plywood rebound board wall to perimeter of sports hall up to 2.55m high
- ⑰ Wall fixed practice basketball goal
- ⑱ Perimeter wall coloured fine acoustic mesh infill netting hung full height above rebound board wall.
- ⑲ Gas radiant tube heating system
- ⑳ Meter room
- ㉑ Cleaner's Store
- ㉒ Wheelchair / secure buggy storage
- ㉓ Vending machine
- ㉔ Roof mounted drop-down basketball goal
- ㉕ Roof mounted photo-voltaic panels
- ㉖ Reinforced concrete floor slab with ground bearing insulation



Section A - A



Section B - B



Section C - C