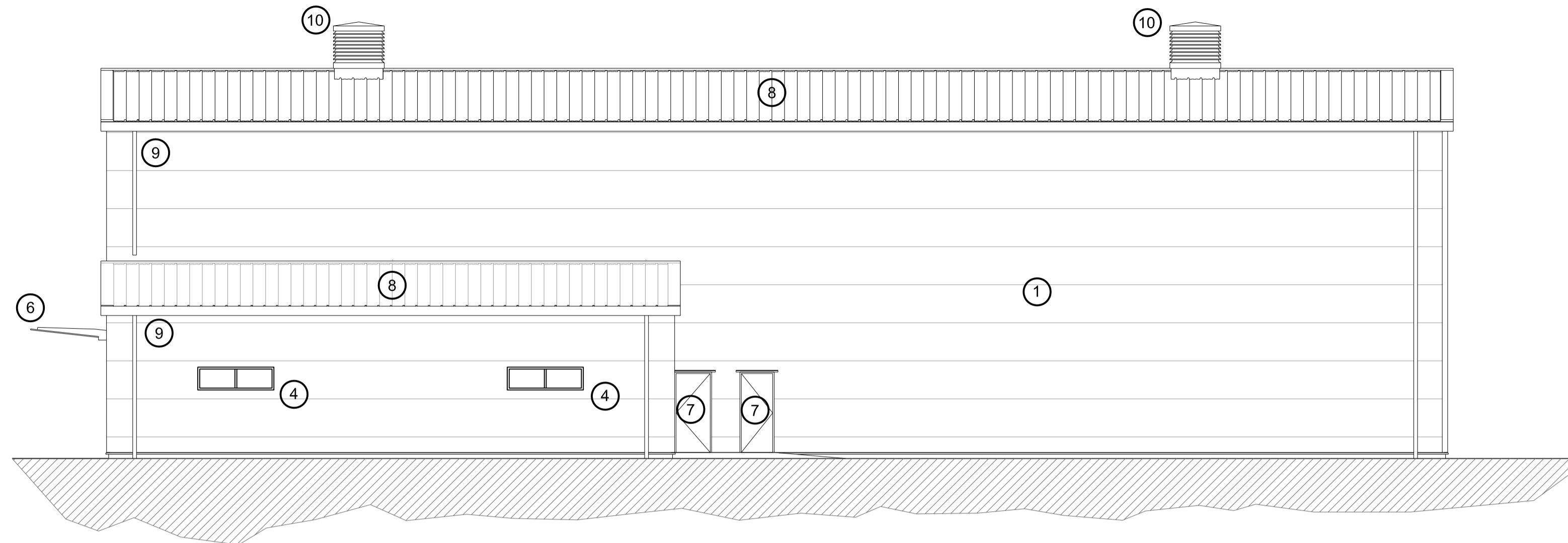


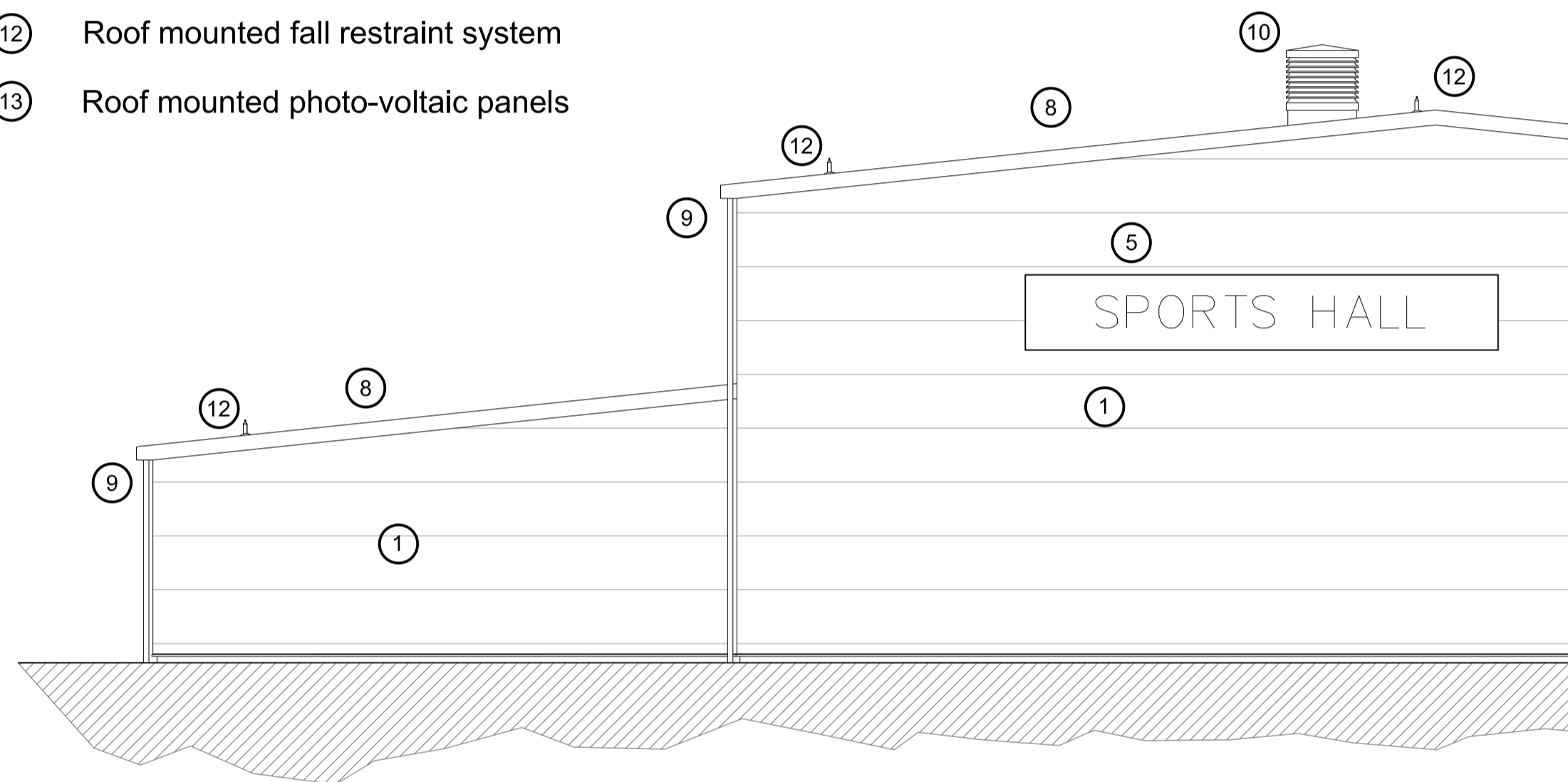
KEY

- ① Profiled steel insulated composite cladding panel
- ③ Aluminium automatic sliding entrance doors and screen
- ④ Powder coated aluminium double glazed windows
- ⑤ Main building signage
- ⑥ Glazed canopy over entrance
- ⑦ Metal flush escape door coloured to match cladding
- ⑧ Profiled metal built up roofing system
- ⑨ Metal guttering and rainwater pipework
- ⑩ Natural ventilation roof cowl

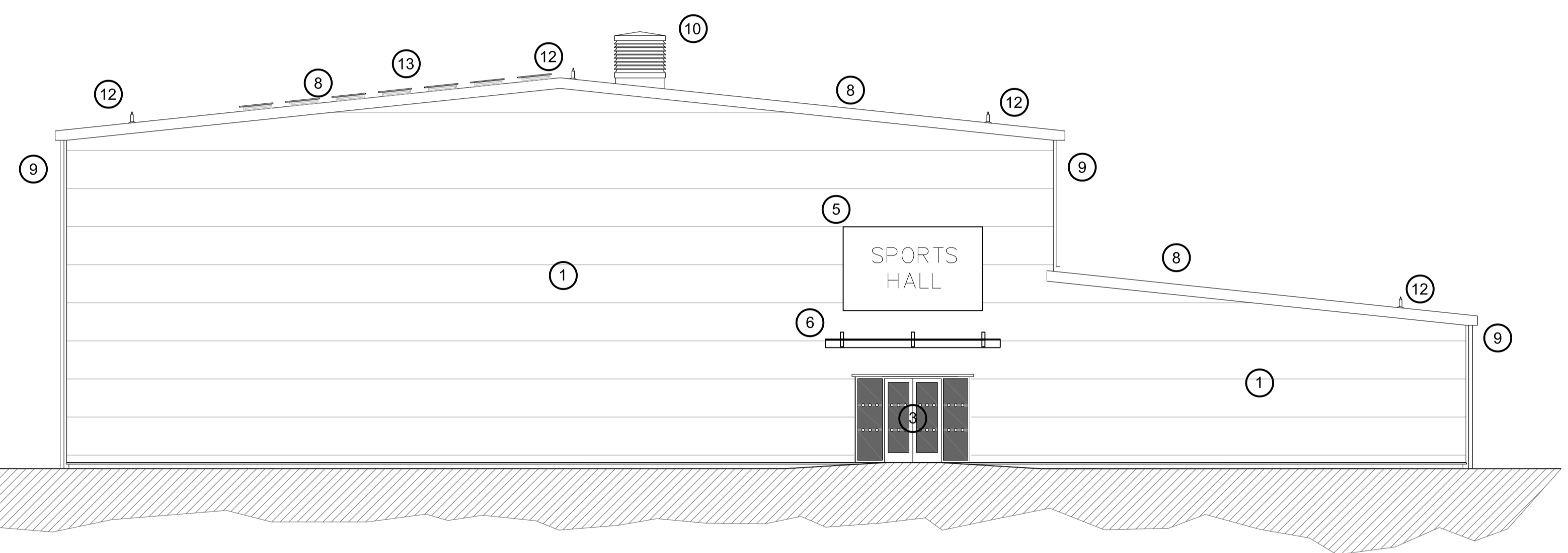


Support Accommodation Elevation

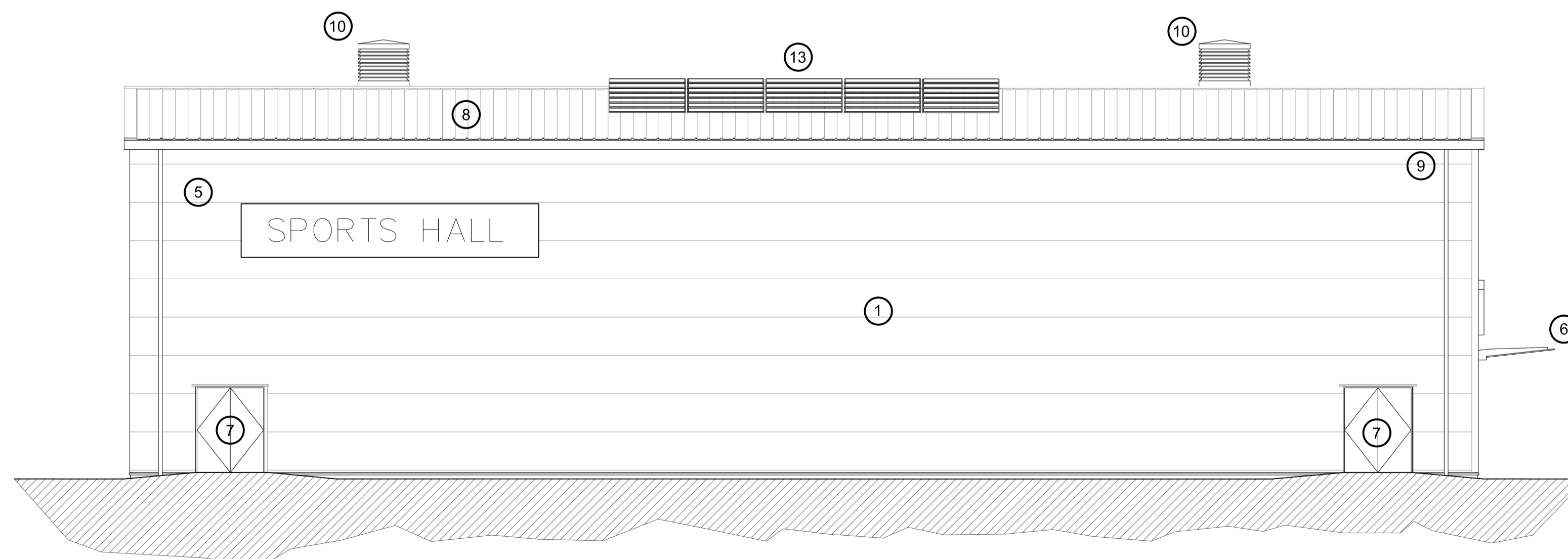
- ⑫ Roof mounted fall restraint system
- ⑬ Roof mounted photo-voltaic panels



Part Sports Hall Rear Elevation



Sports Hall Entrance Elevation



Sports Hall Elevation

Affordable Sports Halls

Option 1b Elevations

Sports Hall + CH

Scale: 0 5000 mm

Date: July 2015

Notes:
 This drawing is an extract from Sport England's publication 'Affordable Sports Halls' and must be read in conjunction with the respective section of the guidance
 DO NOT SCALE FROM THIS DRAWING
 (approx 1:200 @ A3; approx 1:100 @ A1)
 ALL DIMENSIONS ARE IN MILLIMETRES

[Click here for 'Design and Cost Guidance'](#)

[Click here for 'User Guide'](#)