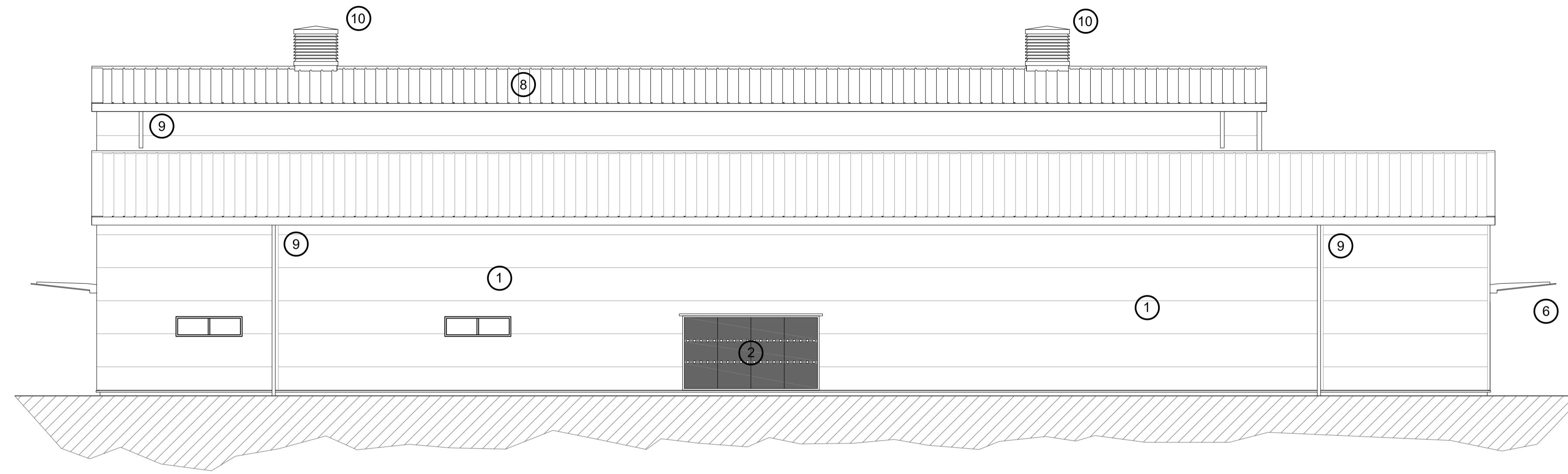


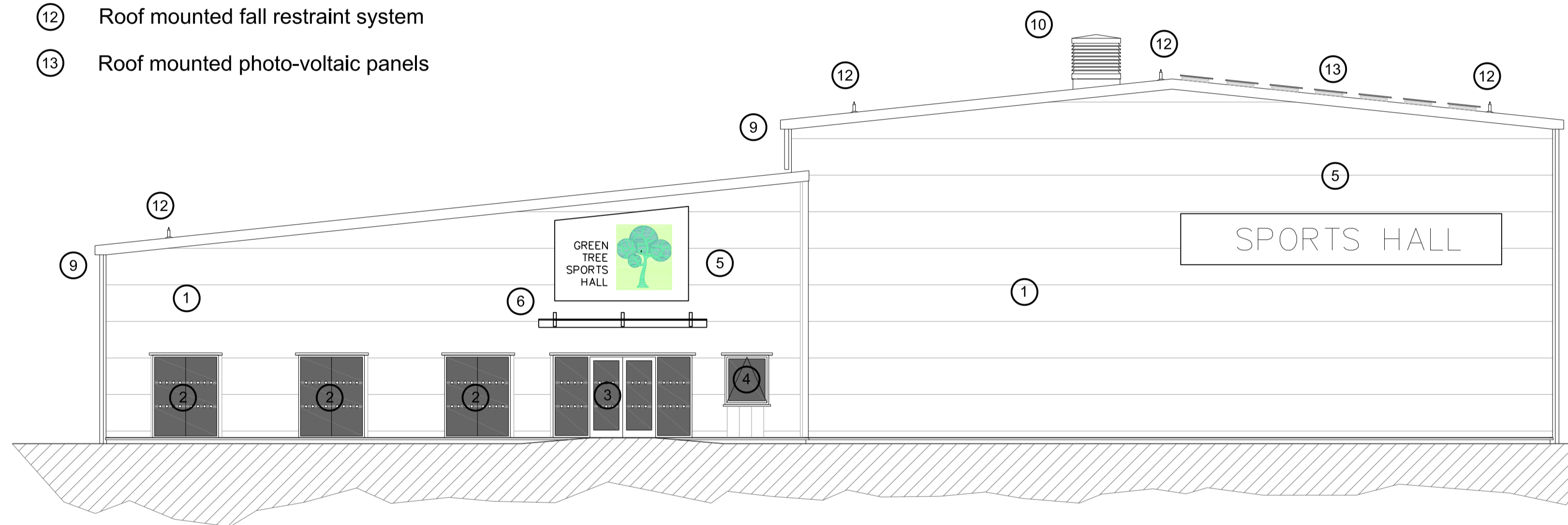
KEY

- ① Profiled steel insulated composite cladding panel
- ② Powder coated aluminium curtain walling
- ③ Aluminium automatic sliding entrance doors and screen
- ⑤ Main building signage
- ⑥ Glazed canopy over entrance
- ⑦ Metal flush escape door coloured to match cladding
- ⑧ Profiled metal built up roofing system
- ⑨ Metal guttering and rainwater pipework
- ⑩ Natural ventilation roof cowl

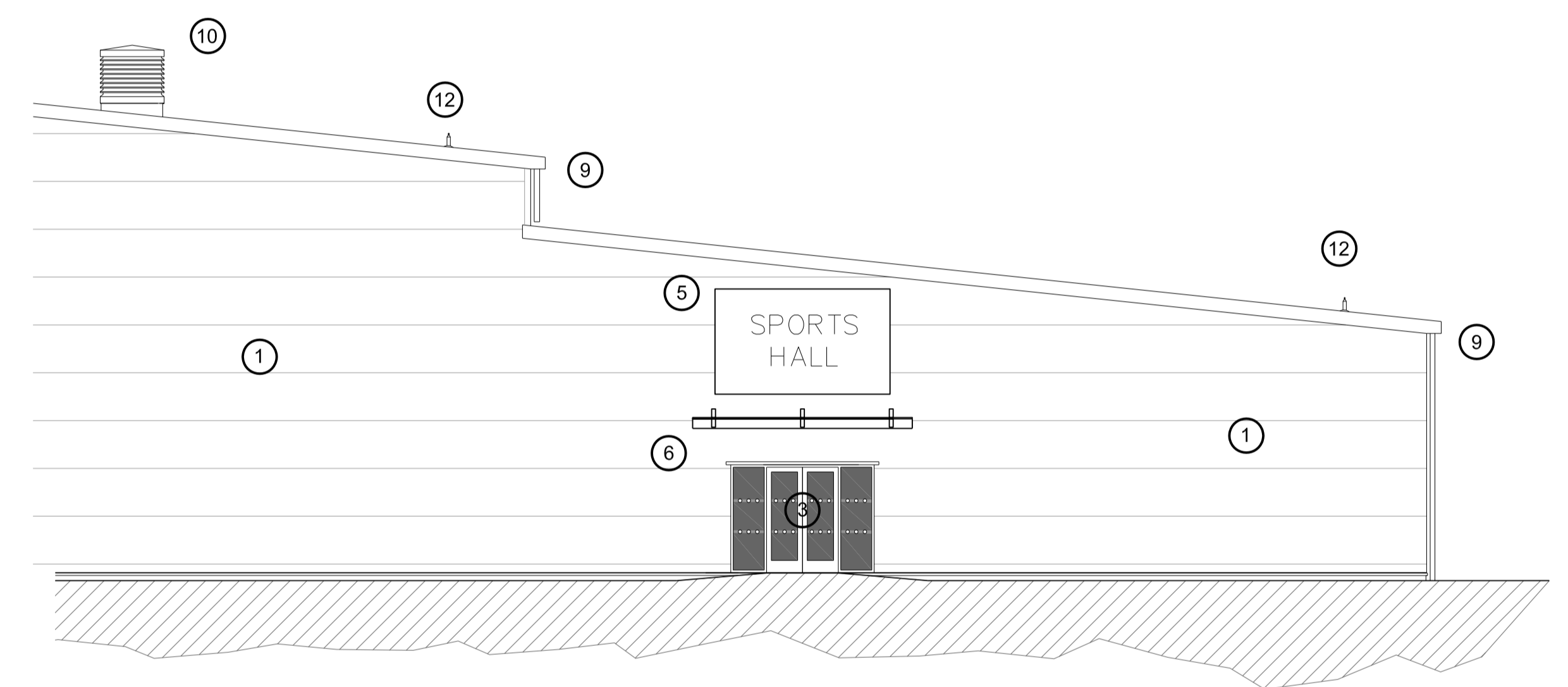


Support Accommodation Elevation

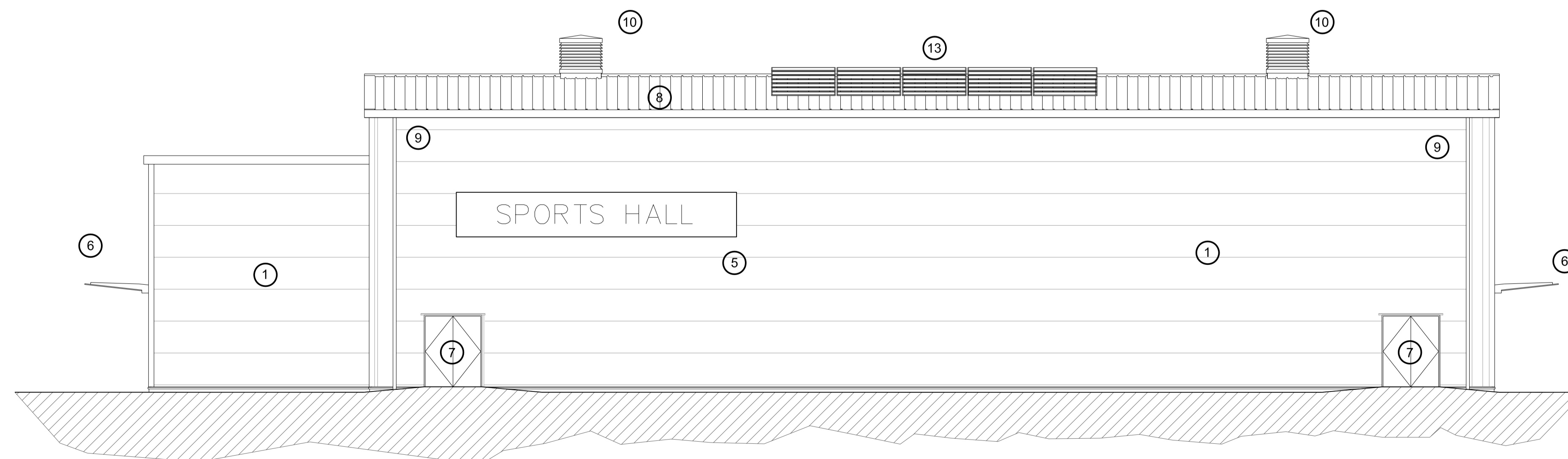
- ⑫ Roof mounted fall restraint system
- ⑬ Roof mounted photo-voltaic panels



Community Entrance Elevation



Part School Entrance Elevation



Sports Hall Elevation

This drawing is an extract from Sport England's publication 'Affordable Sports Halls' and must be read in conjunction with the respective section of the guidance
DO NOT SCALE FROM THIS DRAWING
(approx 1:200 @ A3; approx 1:100 @ A1)
ALL DIMENSIONS ARE IN MILLIMETRES

[Click here for 'Design and Cost Guidance'](#)

[Click here for 'User Guide'](#)