

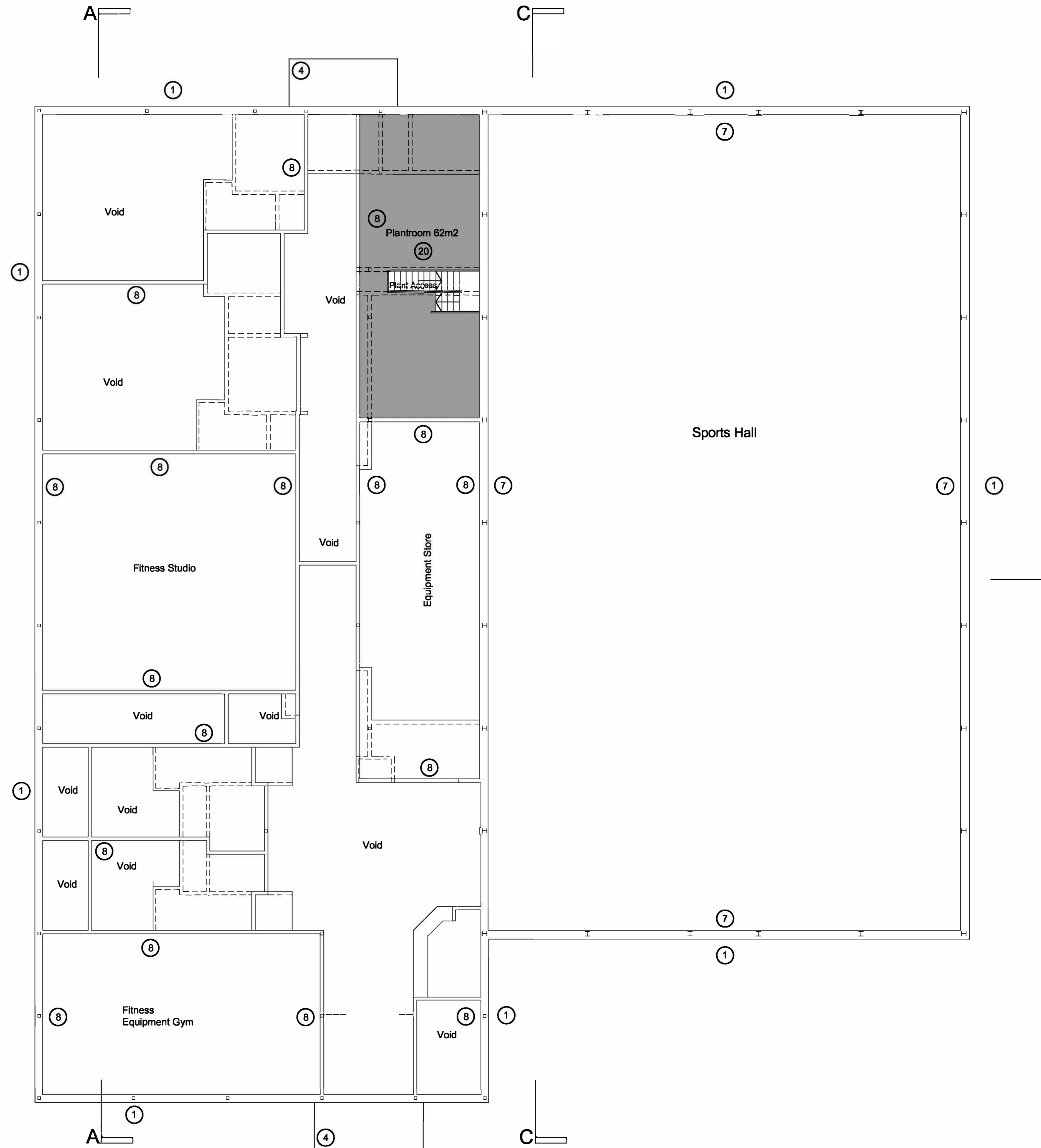
# KEY

① Profiled steel insulated composite cladding on sheeting rails.

⑦ Perimeter wall FR grade laminate faced FR water/boil proof ply rebound board wall to perimeter of sports hall up to 2.55m high, coloured fine acoustic mesh infill netting hung full height above.

⑧ Severe duty drywall partitions/lining c/w plywood sheathing, high impact wall board and acoustic quilt.

⑳ Powerfloated concrete slab with epoxy floor paint.



**Notes:**

This drawing is an extract from Sport England's publication 'Affordable Sports Halls' and must be read in conjunction with the respective section of the guidance  
DO NOT SCALE FROM THIS DRAWING  
(approx 1:200 @ A3; approx 1:100 @ A1)  
ALL DIMENSIONS ARE IN MILLIMETRES

[Click here for 'Design and Cost Guidance'](#)

[Click here for 'User Guide'](#)