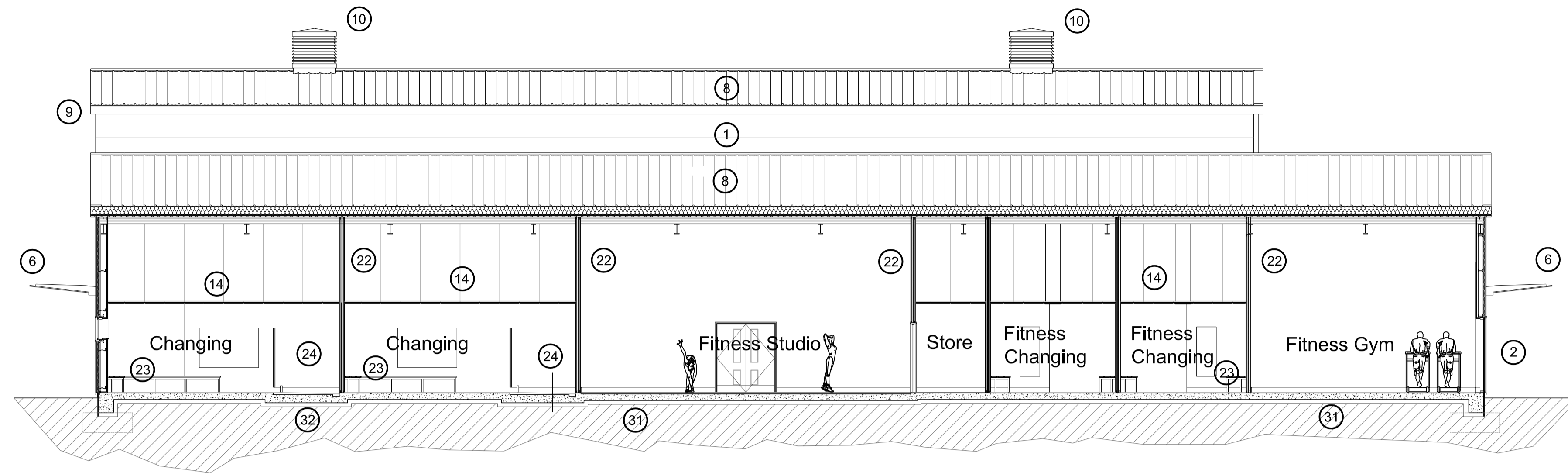
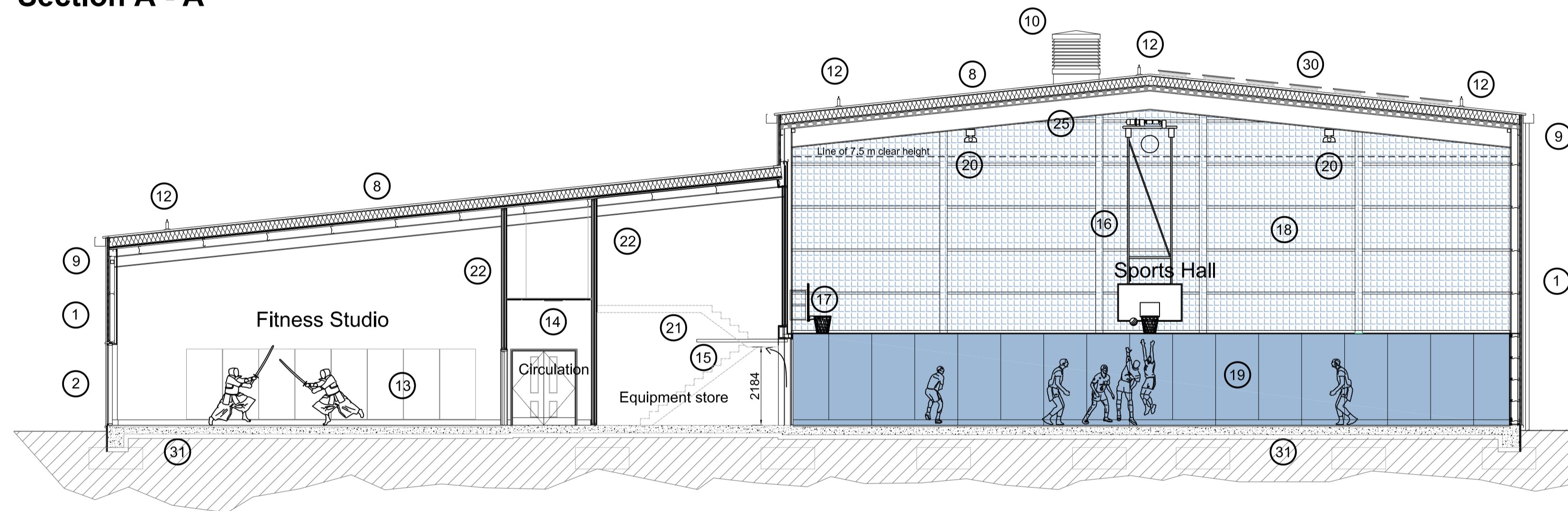


KEY

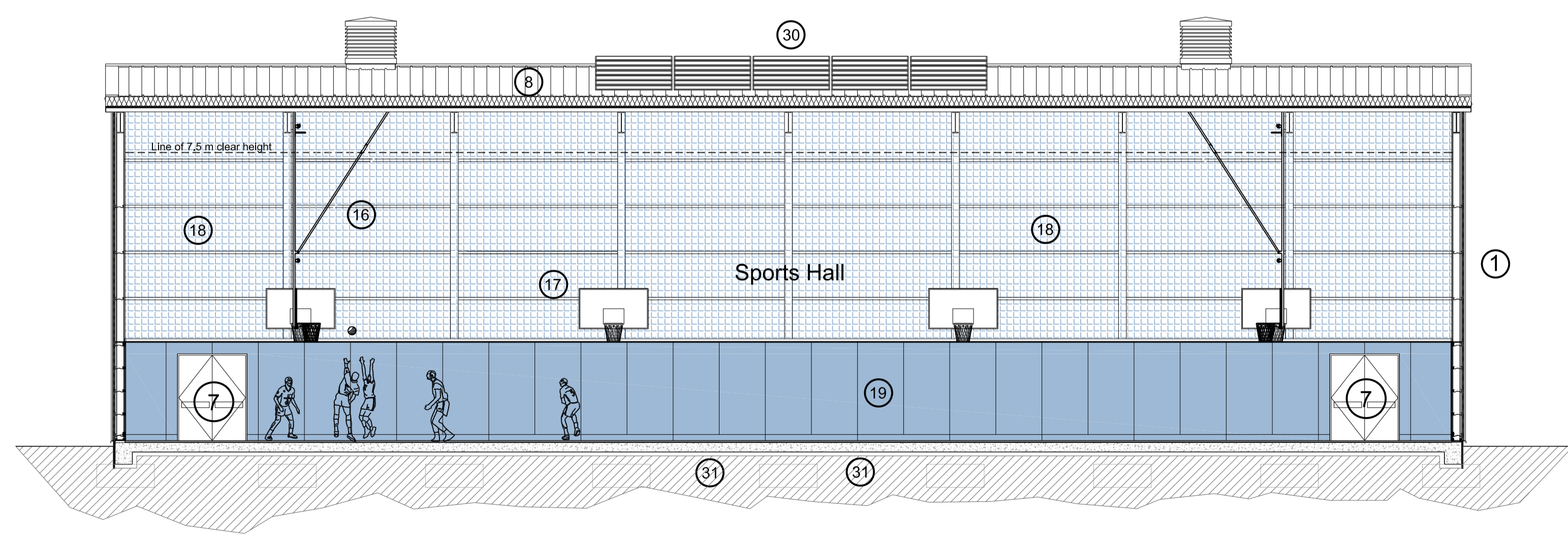
- ① Profiled steel insulated composite cladding panel
- ② Powder coated aluminium curtain walling
- ③
- ④
- ⑤
- ⑥ Glazed canopy over entrance
- ⑦ Metal escape door flush faced with rebound boards
- ⑧ Profiled metal built up roofing system
- ⑨ Metal guttering and rainwater pipework
- ⑩ Natural ventilation roof cowl
- ⑪
- ⑫ Roof mounted fall restraint system
- ⑬ Fitness studio mirror wall
- ⑭ Acoustic suspended ceiling system
- ⑮ Up-and-over Equipment Store door 2.4 x 2.4m
- ⑯ Roof mounted drop-down basketball goal
- ⑰ Wall fixed practice basketball goal
- ⑱ Perimeter wall coloured fine acoustic mesh infill netting hung full height above rebound board wall.
- ⑲ FR grade laminate faced FR WB plywood rebound board wall to perimeter of sports hall up to 2.55m high
- ⑳ Gas radiant tube heating system
- ㉑ Mezzanine plantroom and access stair beyond shown dotted
- ㉒ Severe duty drywall partitions with plywood sheathing.
- ㉓ Changing room bench seating
- ㉔ Shower cubicle
- ㉕ Steel cell beam roof structure forming part of a braced frame
- ⑳ Roof mounted photo-voltaic panels
- ㉑ Reinforced concrete floor slab with ground bearing insulation
- ㉒ Floor slab dropped to shower areas to allow screed to falls



Section A - A



Section B - B



Section C - C