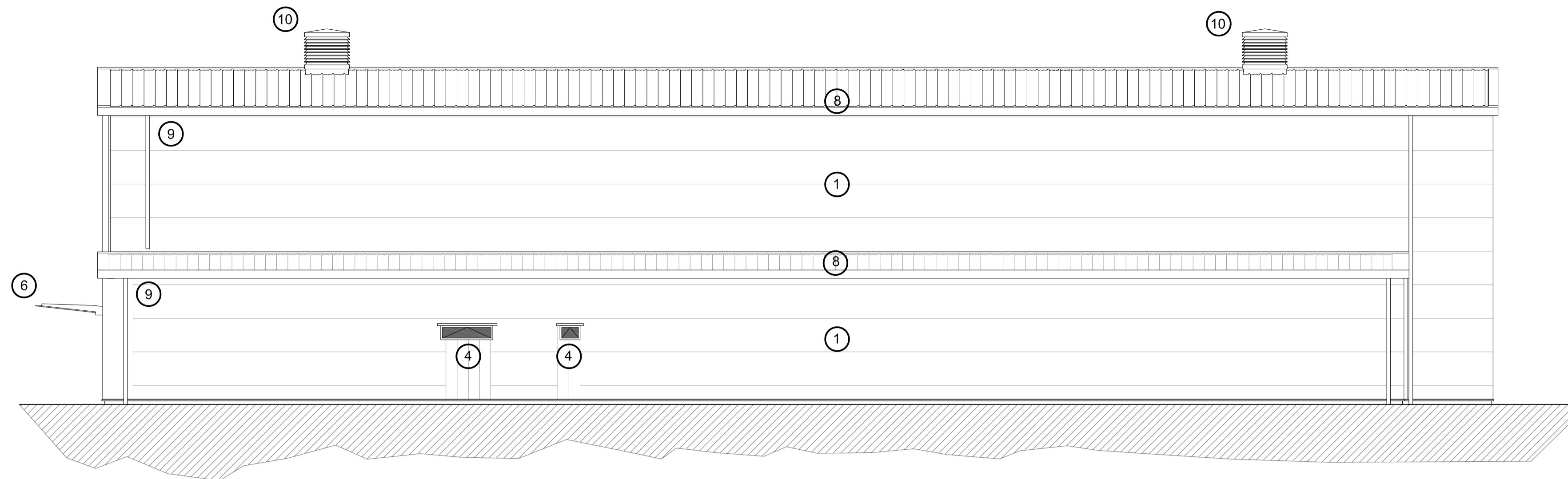


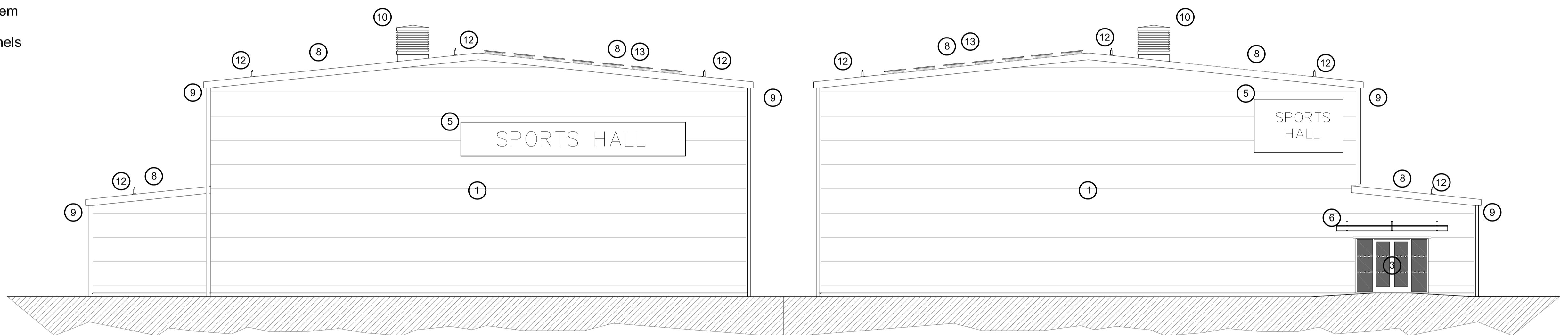
# KEY

- ① Profiled steel insulated composite cladding panel
- ③ Aluminium automatic sliding entrance doors and screen
- ④ Powder coated aluminium double glazed windows
- ⑤ Main building signage
- ⑥ Glazed canopy over entrance
- ⑦ Metal flush escape door coloured to match cladding
- ⑧ Profiled metal built up roofing system
- ⑨ Metal guttering and rainwater pipework
- ⑩ Natural ventilation roof cowl

- ⑫ Roof mounted fall restraint system
- ⑬ Roof mounted photo-voltaic panels

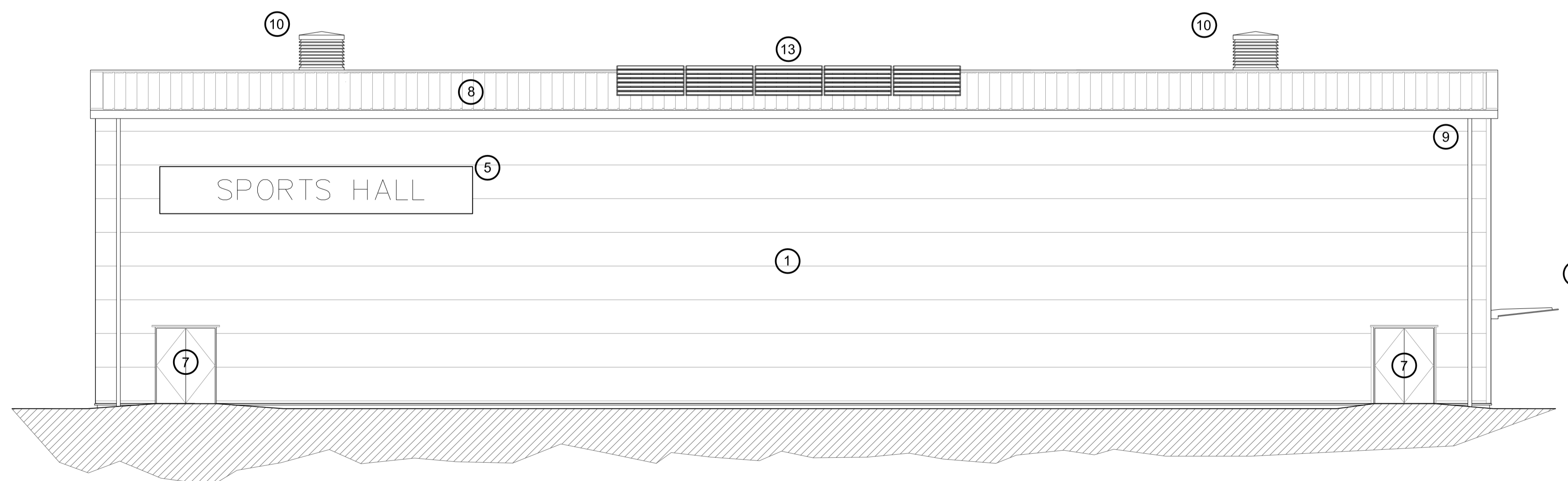


**Support Accommodation Elevation**



**Sports Hall Rear Elevation**

**Sports Hall Entrance Elevation**



**Sports Hall Elevation**

Affordable Sports Halls

## Option 2a Elevations

**Sports Hall**

Scale: 0 5000 mm

Date: July 2015

**Notes:**  
 This drawing is an extract from Sport England's publication 'Affordable Sports Halls' and must be read in conjunction with the respective section of the guidance  
 DO NOT SCALE FROM THIS DRAWING  
 (approx 1:200 @ A3; approx 1:100 @ A1)  
 ALL DIMENSIONS ARE IN MILLIMETRES

[Click here for 'Design and Cost Guidance'](#)

[Click here for 'User Guide'](#)