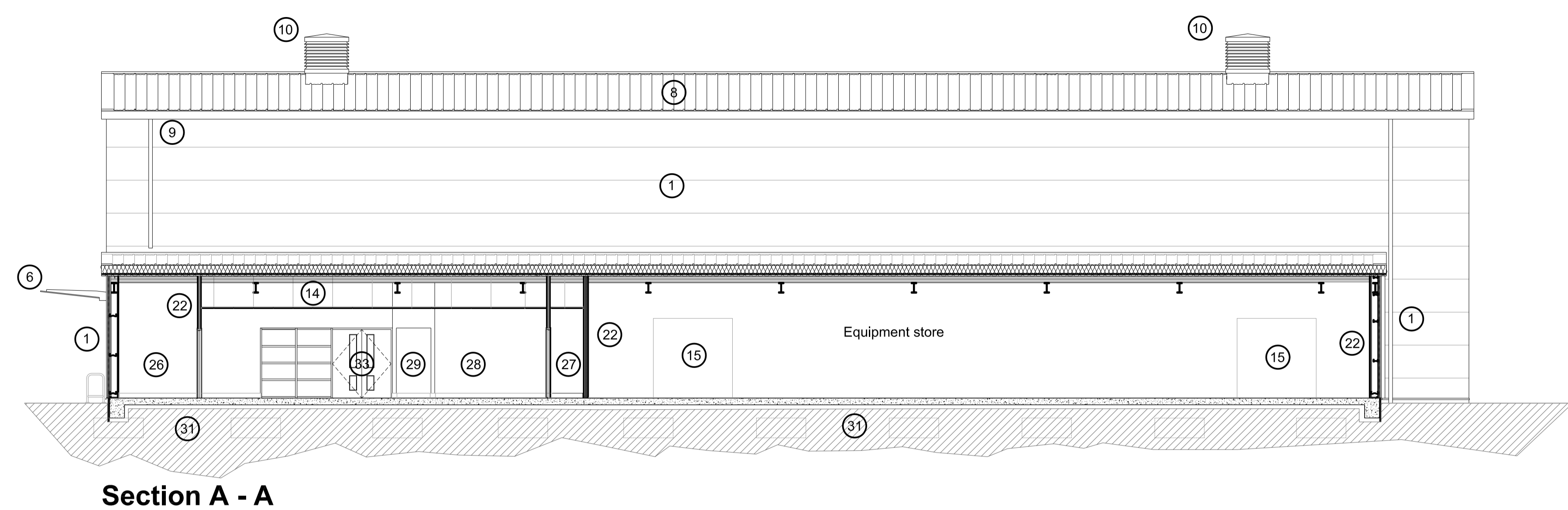
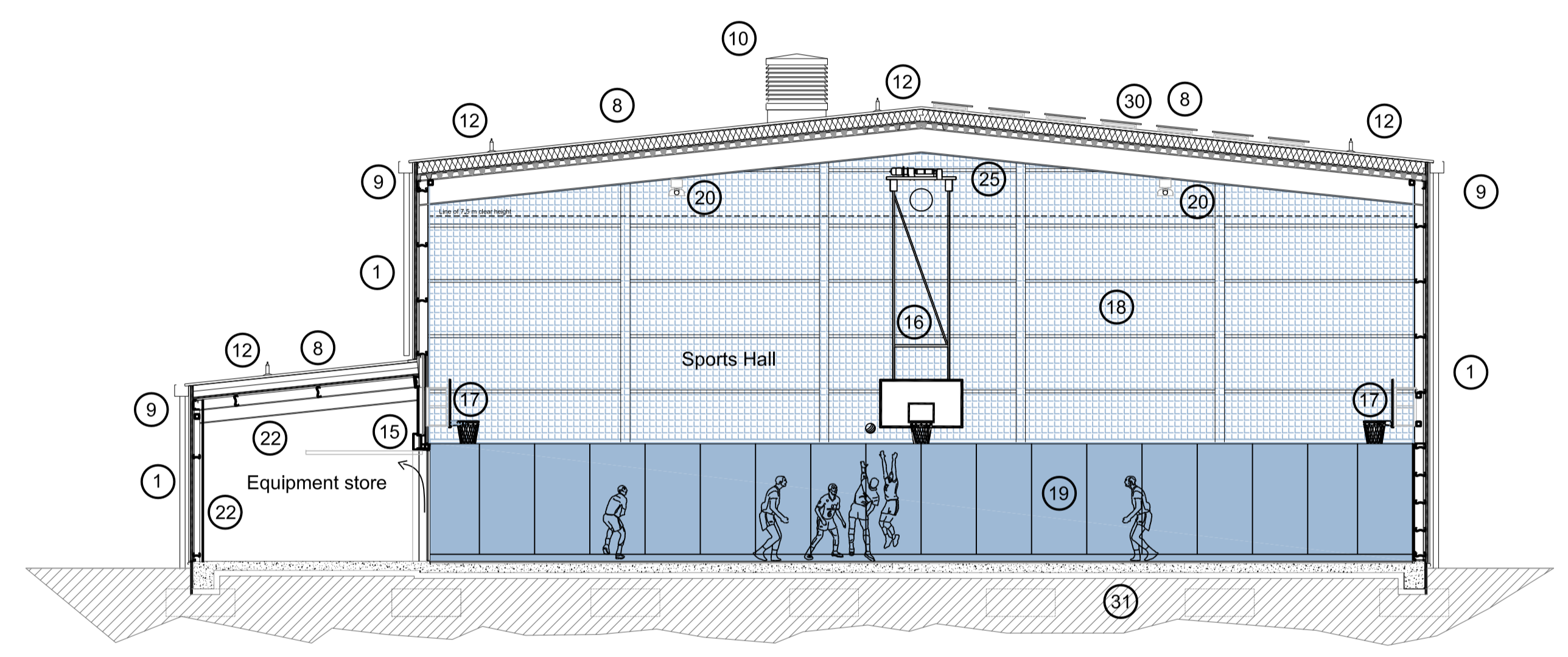


KEY

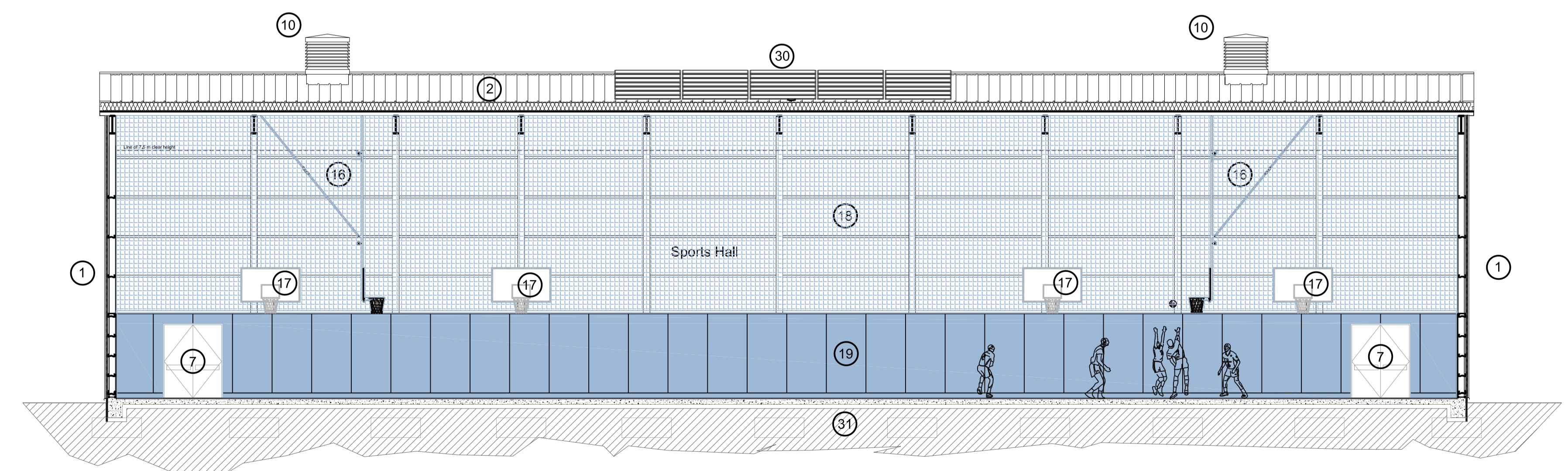
- ① Profiled steel insulated composite cladding panel
- ② Severe duty drywall partitions with plywood sheathing.
- ③ Internal glazed screen and door into sports hall - flush faced and impact resistant
- ④ Acoustic suspended ceiling system
- ⑤ Steel cell beam roof structure forming part of a braced frame
- ⑥ Glazed canopy over entrance
- ⑦ Metal escape door flush faced with rebound boards
⑧ Profiled metal built up roofing system
- ⑨ Metal guttering and rainwater pipework
- ⑩ Natural ventilation roof cowl
- ⑪ Roof mounted fall restraint system
- ⑫ Roof mounted photo-voltaic panels
- ⑬ Gas radiant tube heating system
- ⑭ Acoustic suspended ceiling system
- ⑮ Up-and-over Equipment Store door 2.4 x 2.4m
- ⑯ FR grade laminate faced FR WB plywood rebound board wall to perimeter of sports hall up to 2.55m high
- ⑰ Wall fixed practice basketball goal
- ⑱ Perimeter wall coloured fine acoustic mesh infill netting hung full height above rebound board wall.
- ⑲ FR grade laminate faced FR WB plywood rebound board wall to perimeter of sports hall up to 2.55m high
- ⑳ Gas radiant tube heating system
- ㉑ Meter room
- ㉒ Cleaner's Store
- ㉓ Wheelchair / secure buggy storage
- ㉔ Vending machine
- ㉕ Steel cell beam roof structure forming part of a braced frame
- ㉖ Meter room
- ㉗ Cleaner's Store
- ㉘ Wheelchair / secure buggy storage
- ㉙ Vending machine
- ㉚ Roof mounted photo-voltaic panels
- ㉛ Reinforced concrete floor slab with ground bearing insulation
- ㉜ Floor slab dropped to shower areas to allow screed to falls
- ㉝ Internal glazed screen and door into sports hall - flush faced and impact resistant



Section A - A



Section B - B



Section C - C