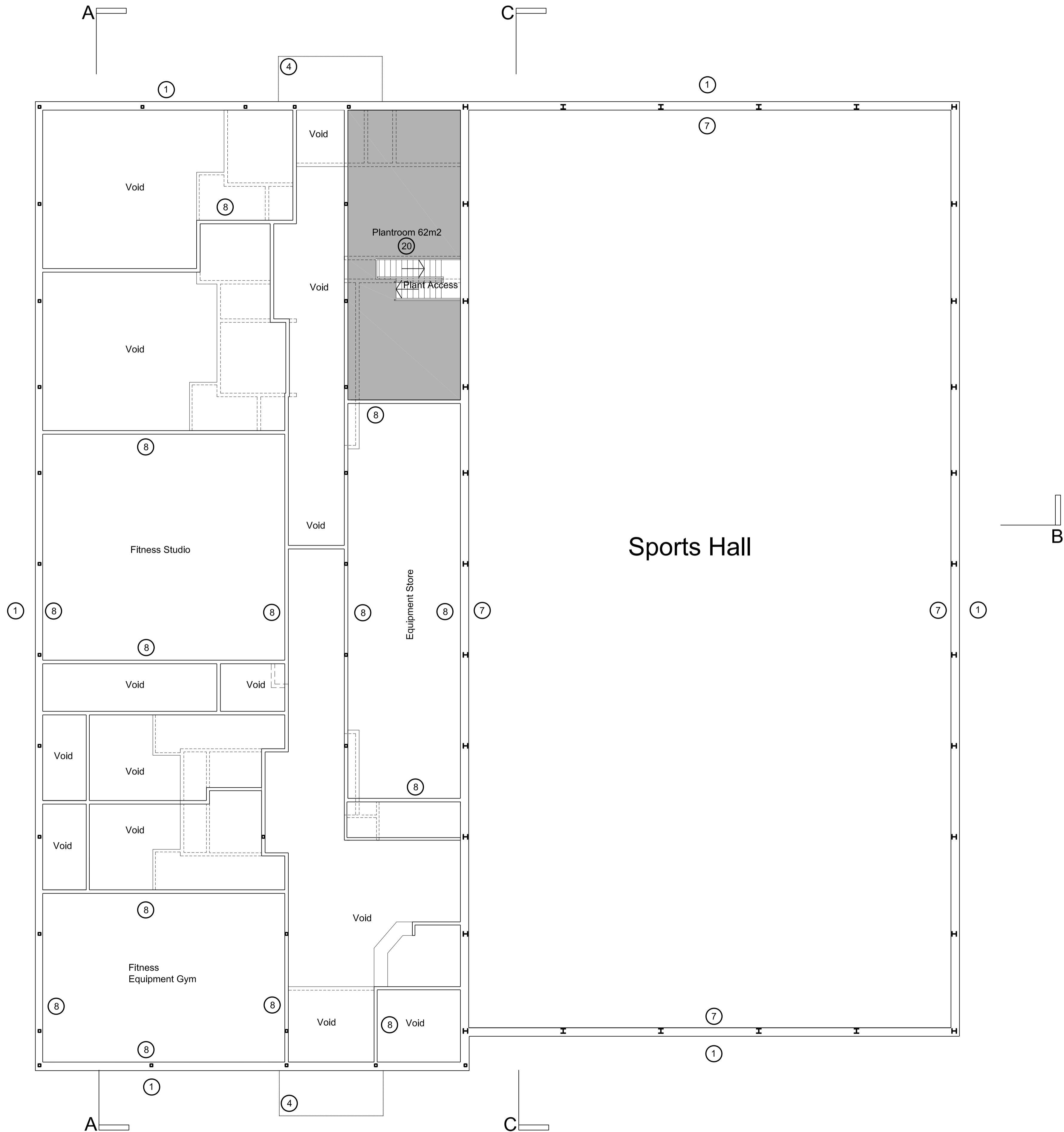


KEY

- ① Profiled steel insulated composite cladding on sheeting rails.
- ④ Glazed canopy over entrance.
- ⑦ Perimeter wall FR grade laminate faced FR water/boil proof ply rebound board wall to perimeter of sports hall up to 2.55m high, coloured fine acoustic mesh infill netting hung full height above.
- ⑧ Severe duty drywall partitions/lining c/w plywood sheathing, high impact wall board and acoustic quilt.



- ②① Powerfloated concrete slab with epoxy floor paint.

Affordable Sports Halls

Option 2c Mezzanine Floor

Sports Hall +CH / HF

Scale: 0 5000 mm

Date: July 2015

Notes:
 This drawing is an extract from Sport England's publication *'Affordable Sports Halls'* and must be read in conjunction with the respective section of the guidance
 DO NOT SCALE FROM THIS DRAWING
 (approx 1:200 @ A3; approx 1:100 @ A1)
 ALL DIMENSIONS ARE IN MILLIMETRES

[Click here for 'Design and Cost Guidance'](#)

[Click here for 'User Guide'](#)