


**Option 2c** Sections  
Sports Hall +CH / HF

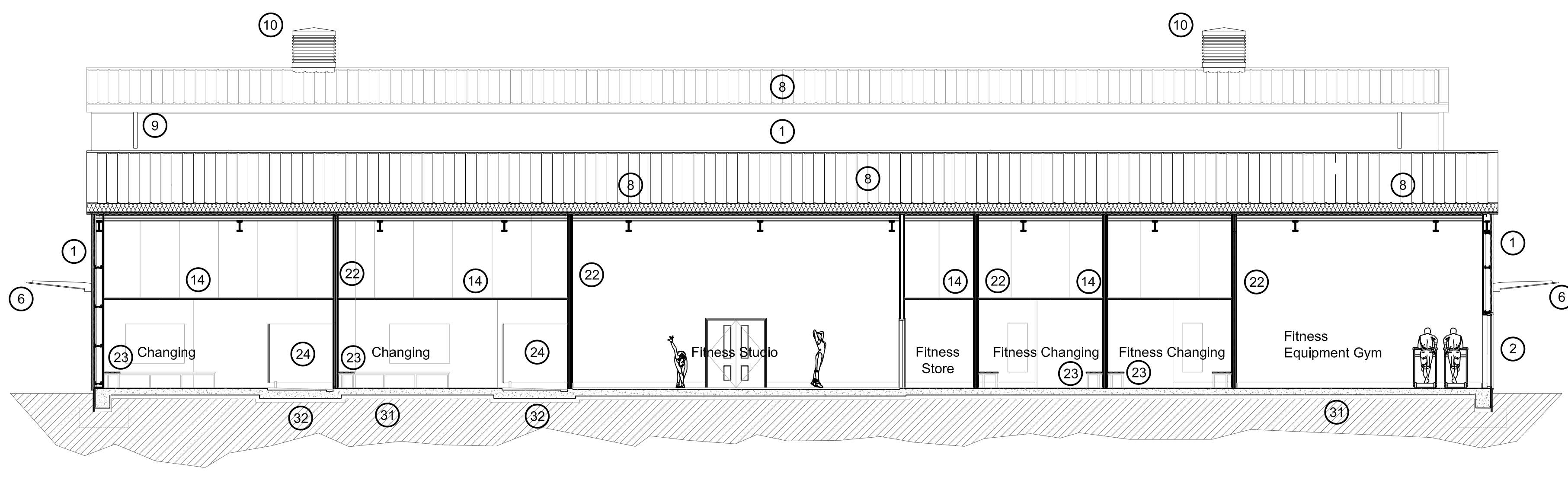
Scale: 0 5000 mm

Date: July 2015  
Notes:  
This drawing is an extract from Sport England's publication 'Affordable Sports Halls' and must be read in conjunction with the respective section of the guidance  
DO NOT SCALE FROM THIS DRAWING  
(approx 1:200 @ A3; approx 1:100 @ A1)  
ALL DIMENSIONS ARE IN MILLIMETRES

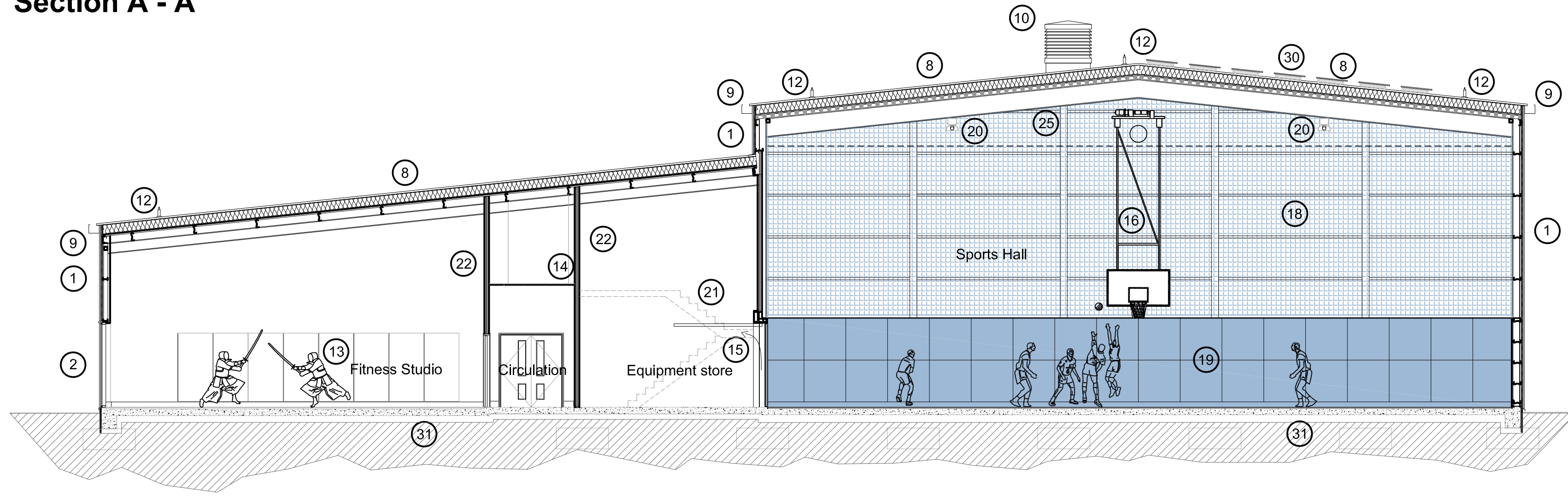
[Click here for 'Design and Cost Guidance'](#)  
[Click here for 'User Guide'](#) 

**KEY**

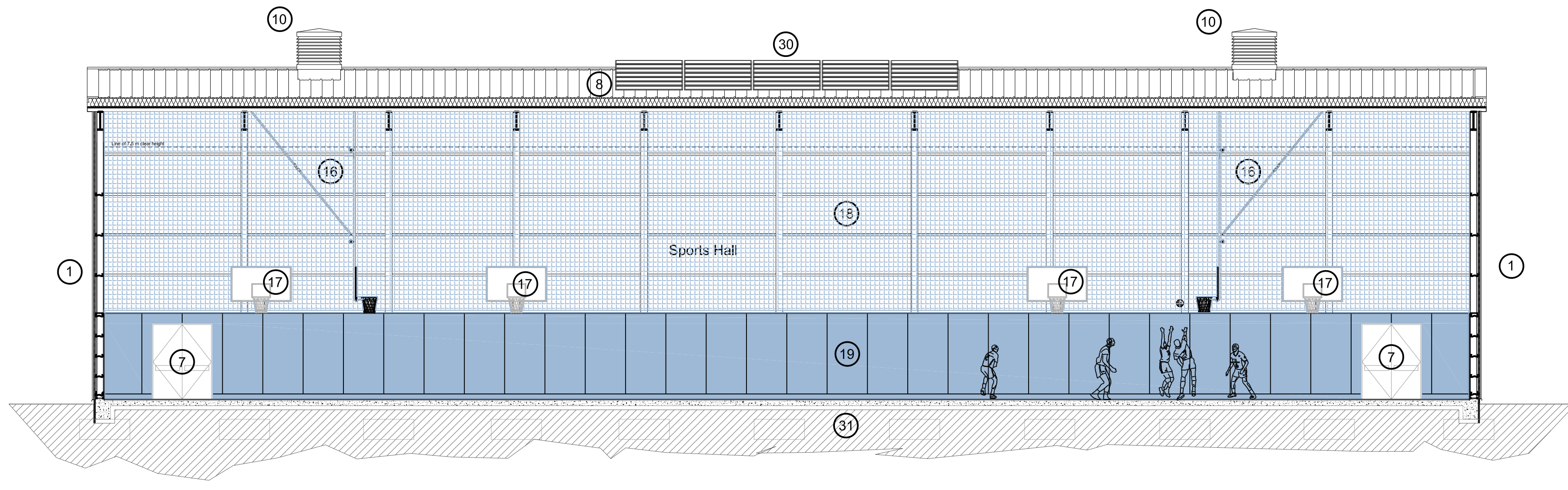
- ① Profiled steel insulated composite cladding panel
- ② Powder coated aluminium curtain walling
- ③
- ④
- ⑤
- ⑥ Glazed canopy over entrance
- ⑦ Metal flush escape door flush faced with rebound boards
- ⑧ Profiled metal built up roofing system
- ⑨ Metal guttering and rainwater pipework
- ⑩ Natural ventilation roof cowl
- ⑪
- ⑫ Roof mounted fall restraint system
- ⑬ Fitness studio mirror wall
- ⑭ Acoustic suspended ceiling system
- ⑮ Up-and-over Equipment Store door 2.4 x 2.4m
- ⑯ Roof mounted drop-down basketball goal
- ⑰ Wall fixed practice basketball goal
- ⑱ Perimeter wall coloured fine acoustic mesh infill netting hung full height above rebound board wall.
- ⑲ FR grade laminate faced FR WB plywood rebound board wall to perimeter of sports hall up to 2.55m high
- ⑳ Gas radiant tube heating system
- ㉑ Mezzanine plantroom and access stair beyond shown dotted
- ㉒ Severe duty drywall partitions with plywood sheathing.
- ㉓ Changing room bench seating
- ㉔ Shower cubicle
- ㉕ Steel cell beam roof structure forming part of a braced frame
- ⑳ Roof mounted photo-voltaic panels
- ㉑ Reinforced concrete floor slab with ground bearing insulation
- ㉒ Floor slab dropped to shower areas to allow screed to falls



**Section A - A**



**Section B - B**



**Section C - C**