

**6 lane pool with secondary pool
Floor plans**

Scale: 1:200 @ A3

Notes:
This drawing is developed from Sport England's publication Affordable Community Swimming Pools and must be read in conjunction with the document.

DO NOT SCALE FROM THIS DRAWING

[Click here for 'Design and Cost Guidance'](#)

[Click here for 'User Guide'](#)

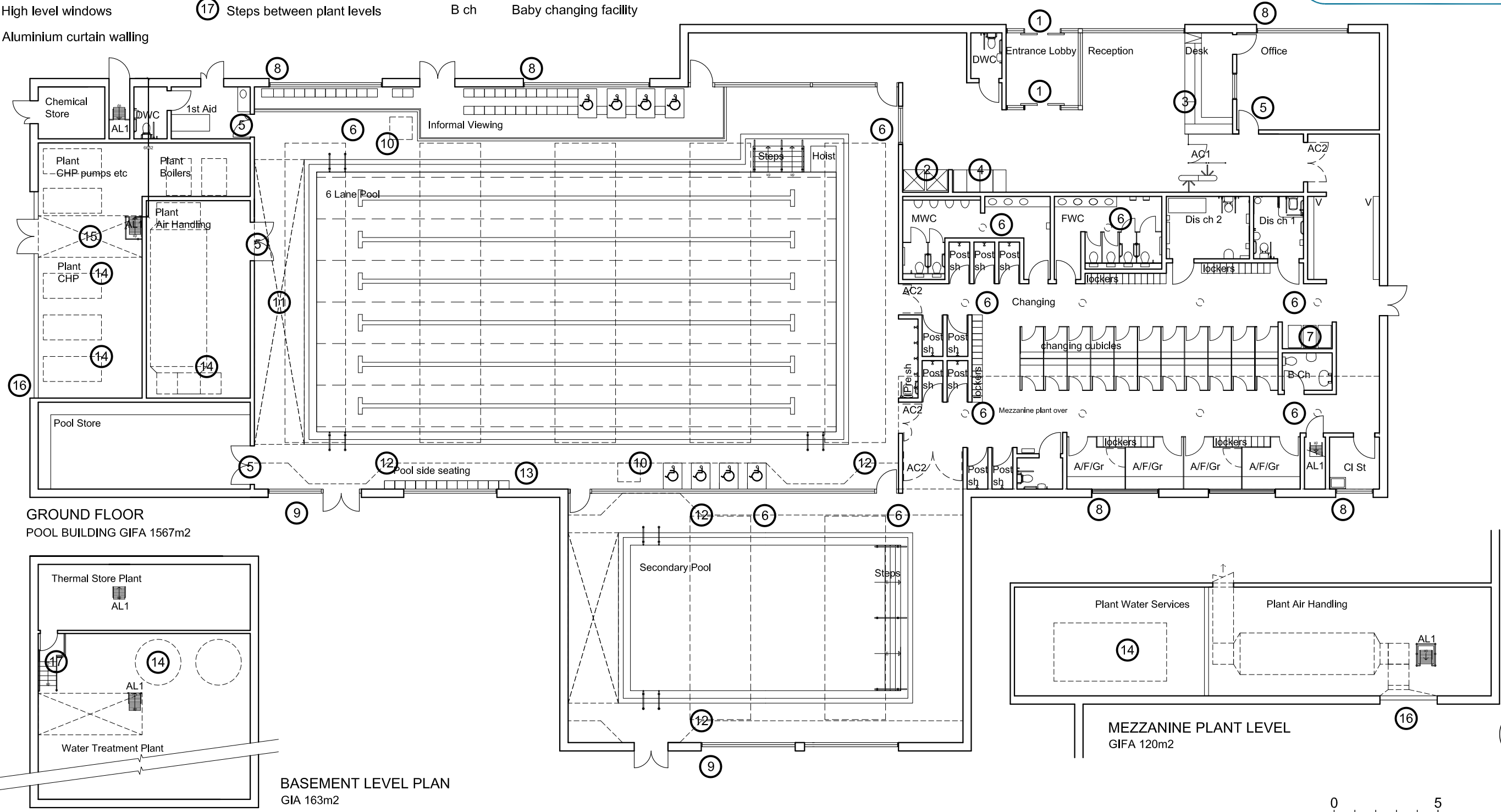


KEY

- ① Automatic doors
- ② Vending machines
- ③ Area of low level counter
- ④ Buggy park
- ⑤ Staff only door
- ⑥ Sun tubes to changing, rooflights to pool hall
- ⑦ Wheel chair storage
- ⑧ High level windows
- ⑨ Aluminium curtain walling
- ⑩ Possible life guard position
- ⑪ Balance tank under
- ⑫ Extent of pool surround to meet BSEN 15288 Part 1
- ⑬ Window plinth seating
- ⑭ Plant equipment
- ⑮ Removable section of floor
- ⑯ External louvre panels
- ⑰ Steps between plant levels

ABBREVIATIONS

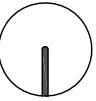
- FWC Female WC
- MWC Male WC
- DWC Unisex accessible WC 2.2 X 1.5m
- A/F/Gr Accessible / family / group changing cubicle minimum 2.0 X 2.6m
- Dis. ch 1 Unisex accessible changing place facility with WC and shower 2.5 X 2.4
- Dis. ch 2 Unisex accessible changing place facility with WC and shower 4.0 X 3.0
- Cl. St Cleaners store
- B ch Baby changing facility
- Post. sh Post swim shower
- Pre. sh Pre swim shower
- AC1 Access control turnstile
- AC2 Door or gate controlled access of pool when out of hours. Hold open when pool is in use
- V Vanity
- AL1 Access ladder to high level plant area



GROUND FLOOR
POOL BUILDING GIFA 1567m2

BASEMENT LEVEL PLAN
GIA 163m2

MEZZANINE PLANT LEVEL
GIFA 120m2



North

0 5 10m

6 lane pool with secondary pool Sections

Scale: 1:200 @ A3

Notes:
This drawing is developed from Sport England's publication Affordable Community Swimming Pools and must be read in conjunction with the document.

DO NOT SCALE FROM THIS DRAWING

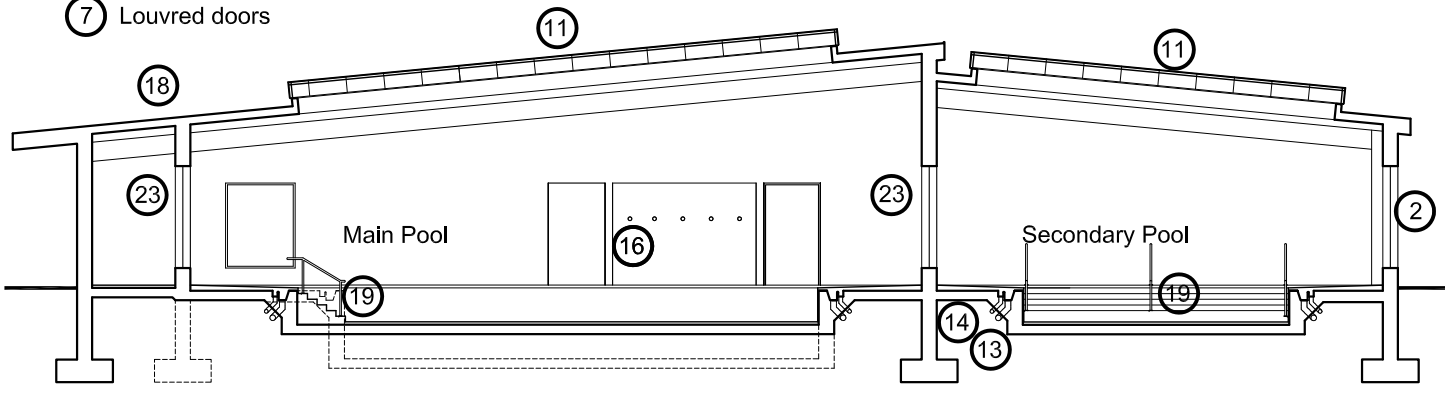
[Click here for 'Design and Cost Guidance'](#)

[Click here for 'User Guide'](#)

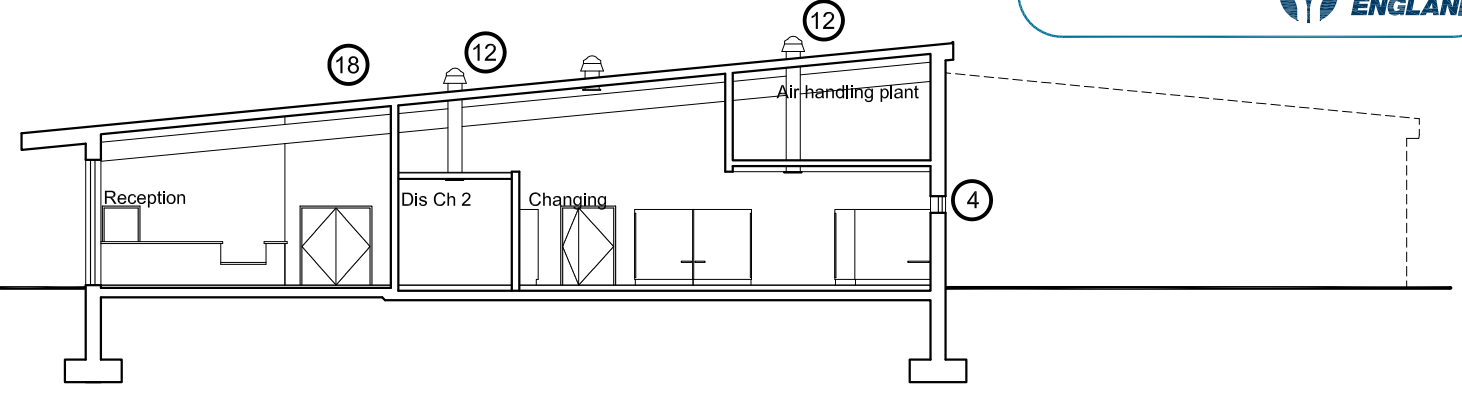


KEY

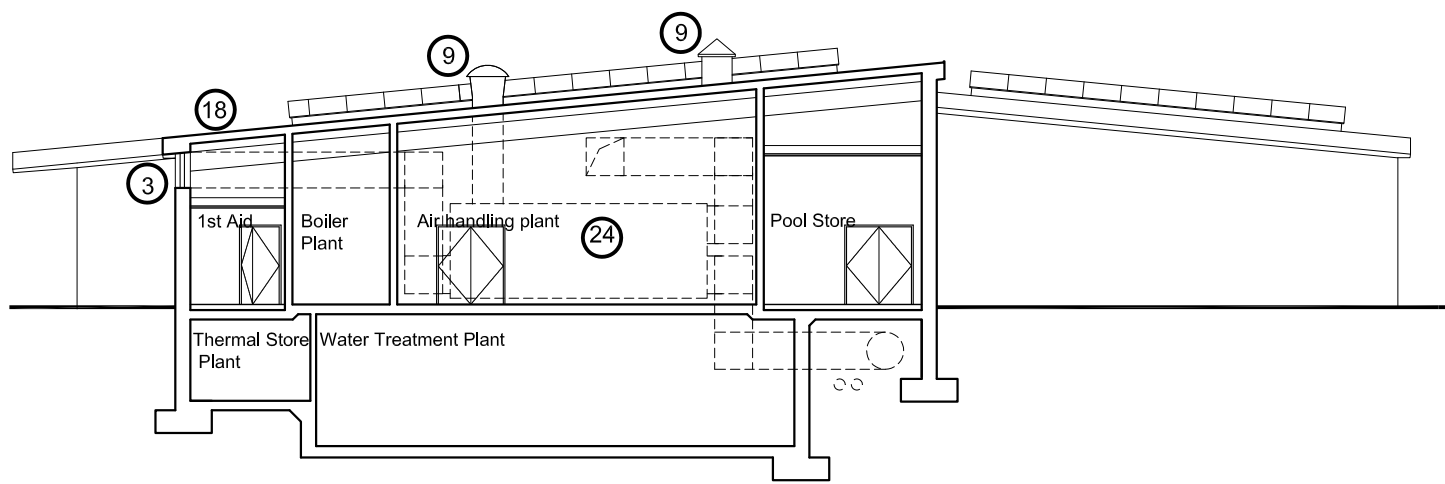
- | | | | |
|---|---|---|--------------------------|
| ① External wall - outer leaf dependent on site conditions e.g facing brick, stone, render or rain screen system | ⑧ Building signage (possibly illuminated) | ⑭ Foul drainage from pool surround | ⑲ Easy steps to water |
| ② Aluminium curtain walling | ⑨ Roof cowl for exhaust air from plant equipment | ⑮ Plinth seating | ⑳ Recessed pool steps |
| ③ External louvre panels | ⑩ Plant equipment flue to terminate 3m above roof level | ⑯ Pre-swim showers | ㉑ Rest ledge |
| ④ High level windows | ⑪ Low rise barrelvault roof light | ⑰ Supply ductwork under pool surround | ㉒ Balance tank |
| ⑤ Automatic entrance doors | ⑫ Sun tubes | ⑱ Roof finish dependent on site conditions e.g. standing seam or single ply systems | ㉓ Internal glazed screen |
| ⑥ Metal doors | ⑬ Filtration pipework | | ㉔ Plant equipment |
| ⑦ Louvred doors | | | |



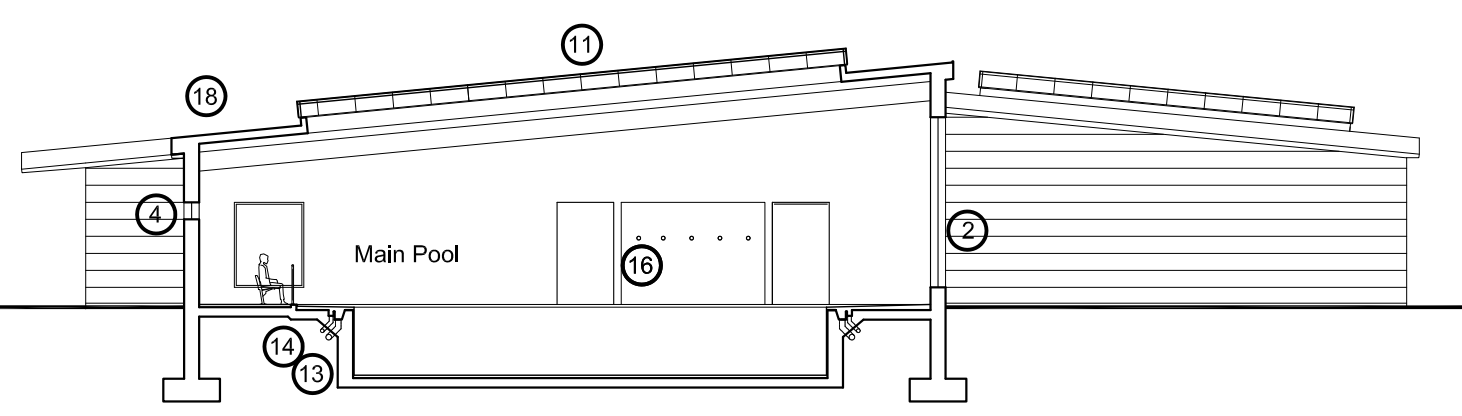
MAIN POOL & SECONDARY POOL CROSS SECTION



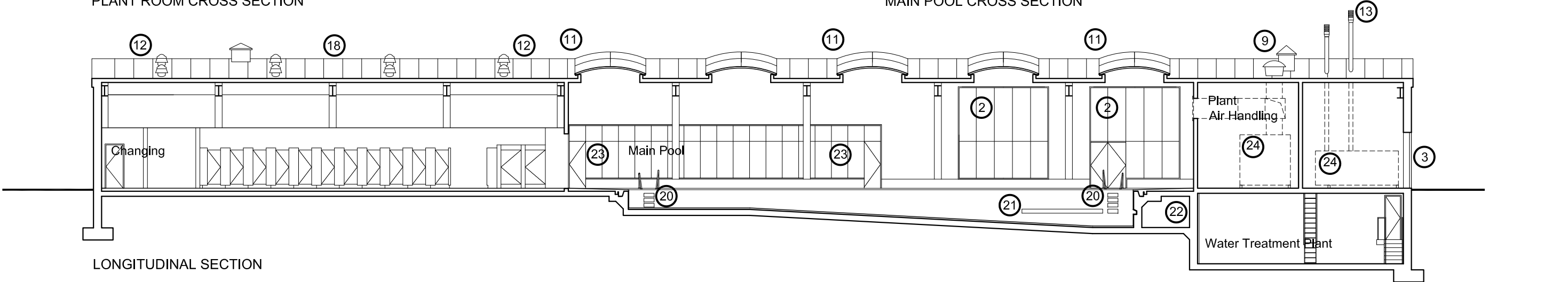
CHANGING ROOM CROSS SECTION



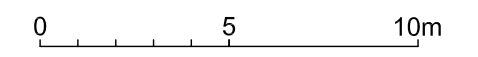
PLANT ROOM CROSS SECTION



MAIN POOL CROSS SECTION



LONGITUDINAL SECTION



6 lane pool with secondary pool Elevations

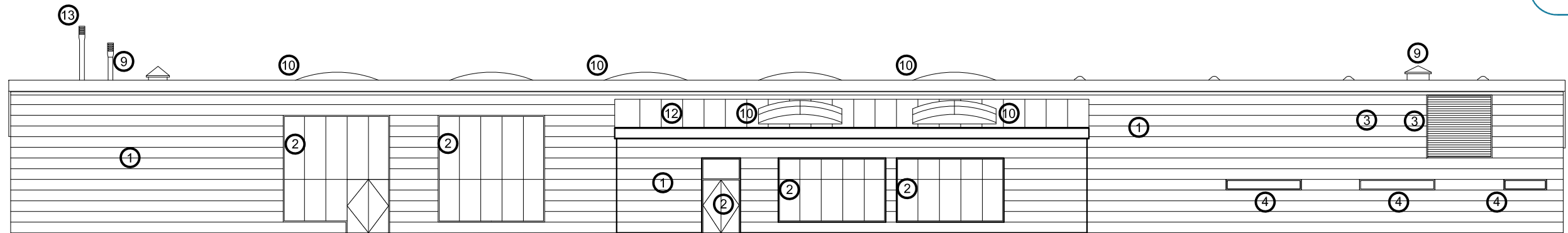
Scale: 1:200 @ A3
Notes:
 This drawing is developed from Sport England's publication Affordable Community Swimming Pools and must be read in conjunction with the document.

DO NOT SCALE FROM THIS DRAWING

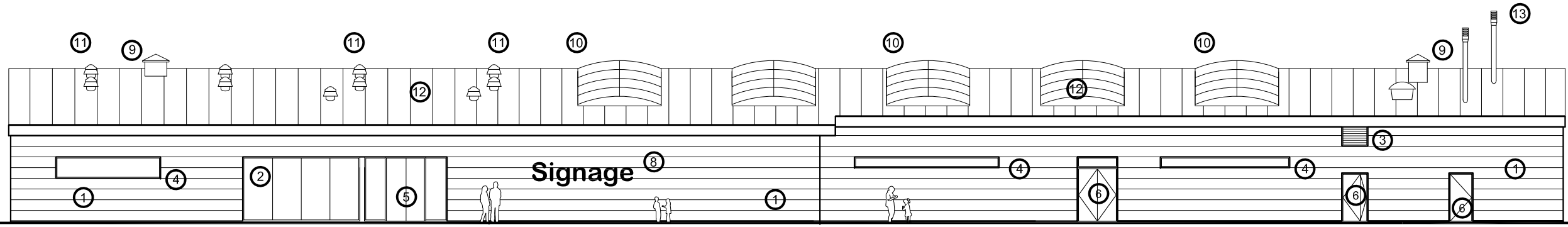
[Click here for 'Design and Cost Guidance'](#)
[Click here for 'User Guide'](#)



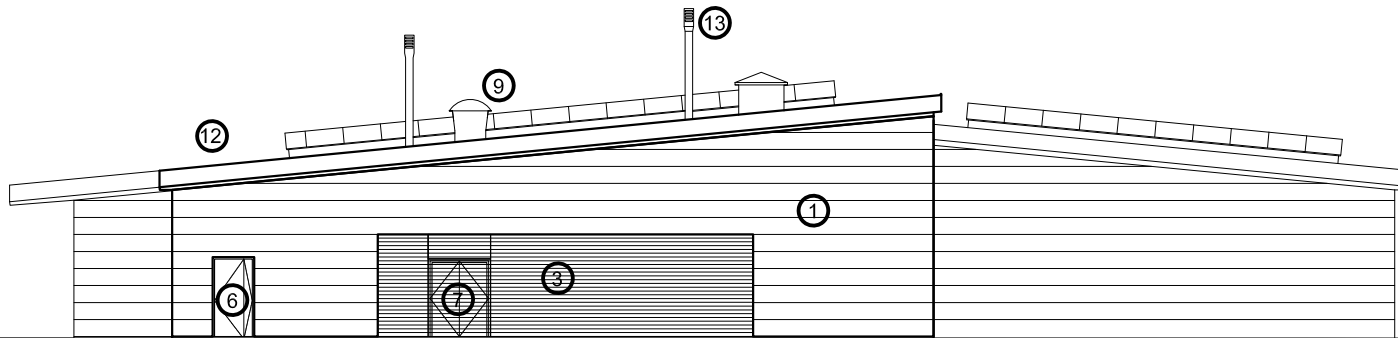
- KEY**
- | | | |
|---|--|---|
| ① External wall - outer leaf dependant on site conditions e.g. facing brick, stone render or a rain screen system | ⑤ Automatic entrance doors | ⑩ Low rise barrelvaul roof light |
| ② Aluminium curtain walling | ⑥ Metal doors | ⑪ Sun tubes |
| ③ External louvre panels | ⑦ Louvred doors | ⑫ Roof finish dependent on site conditions e.g. standing seam or single ply systems |
| ④ High level windows | ⑧ Building signage (possibly illuminated) | ⑬ Plant equipment flue to terminate 3m above roof level |
| | ⑨ Roof cowl for exhaust air from plant equipment | |



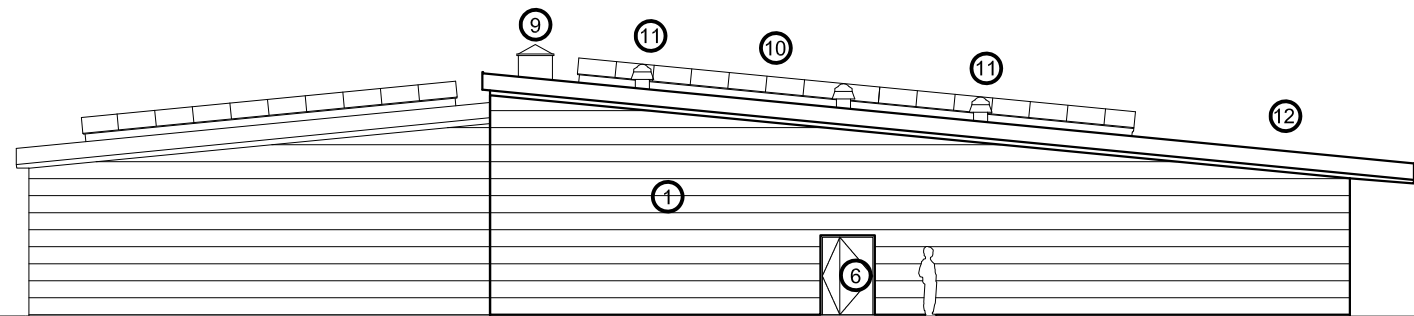
NORTH ELEVATION



SOUTH ELEVATION



EAST ELEVATION



WEST ELEVATION

