

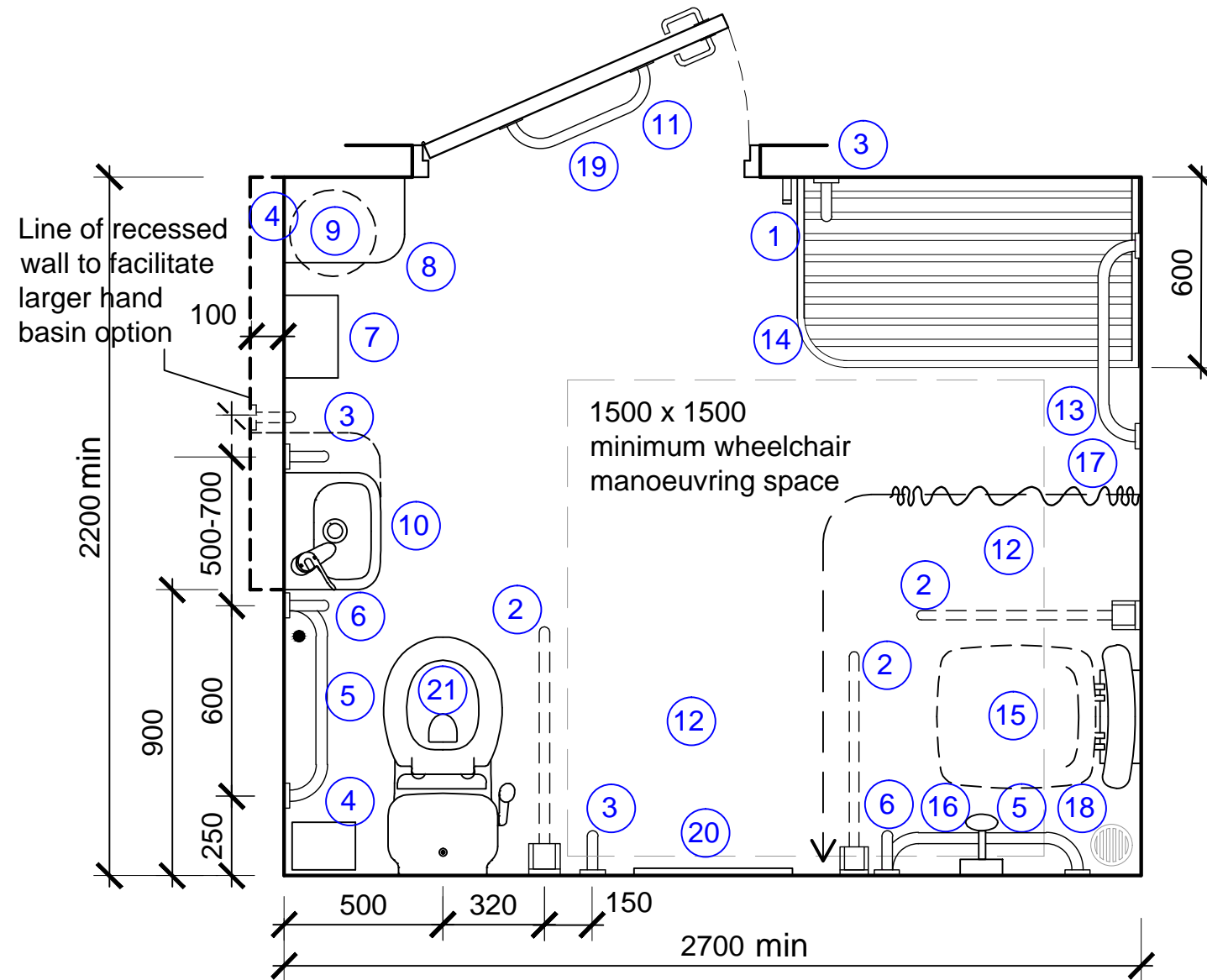
Unisex accessible changing room with shower, WC and fixed bench seat **Fig. 18**

Scale: 1:20 @ A3

Notes:
 This drawing is an extract from Sport England's Design Guidance Note 'Accessible Sports Facilities' and must be read in conjunction with the respective section of the guidance note
 DO NOT SCALE FROM THIS DRAWING
 ALL DIMENSIONS ARE IN MILLIMETRES

[Click here for 'Design and Cost Guidance'](#)

[Click here for 'User Guide'](#)



Key:

1. Two clothes hooks set at 1400mm and 1050mm above floor level
2. Drop-down rail (without toilet roll holder)
3. Fixed vertical rail
4. Colostomy changing shelf for ambulant users 950mm above floor level
5. Fixed horizontal grabrail
6. Fixed vertical rail and adjacent alarm pull-chord with two red triangles
7. Automatic hand dryer
8. Low shelf with rounded corner
9. Disposal bin for miscellaneous items with sanitary dispenser above (750-1000mm above floor level)
10. Hand basin can be recessed in order for a larger basin to be used (as an alternative to a standard small basin). The thermostatic mixer tap to be located on the WC side of the basin.
11. Horizontal door pull to enable door to be closed when entering
12. It is essential to keep the area adjacent to the WC clear to allow transfer onto the WC
13. Fixed horizontal grabrail used as towel rail
14. 600mm deep fixed bench seat with rounded corner and soft round edges
15. Padded tip-up shower seat with backrest. Front edge set 600-700mm from back wall to allow lateral transfer
16. Shower controls - lever-operated, thermostatically controlled (max 41 degrees centigrade)
17. Shower curtain and rail
18. Floors laid with simple falls to flush gully or grating
19. 1026mm door to achieve minimum clearance requirement of 875mm
20. Mirror 1500mm high, located 600mm above floor
21. WC: flush lever to wheelchair transfer side; transferring from a wheelchair to a WC imposes significant forces, therefore all fittings must be robust. Wing nut fixings should not be used to secure the toilet seat.

If two changing rooms of these types are to be provided they should be mirrored to allow for left hand and right hand transfer.

Refer to Sport England's Design Guidance Note 'Accessible Sports Facilities' Figures 18 & 26 for key setting-out dimensions for WC and basin and Figure 21 for shower wall elevation.