

Scale: 1:20 @ A3

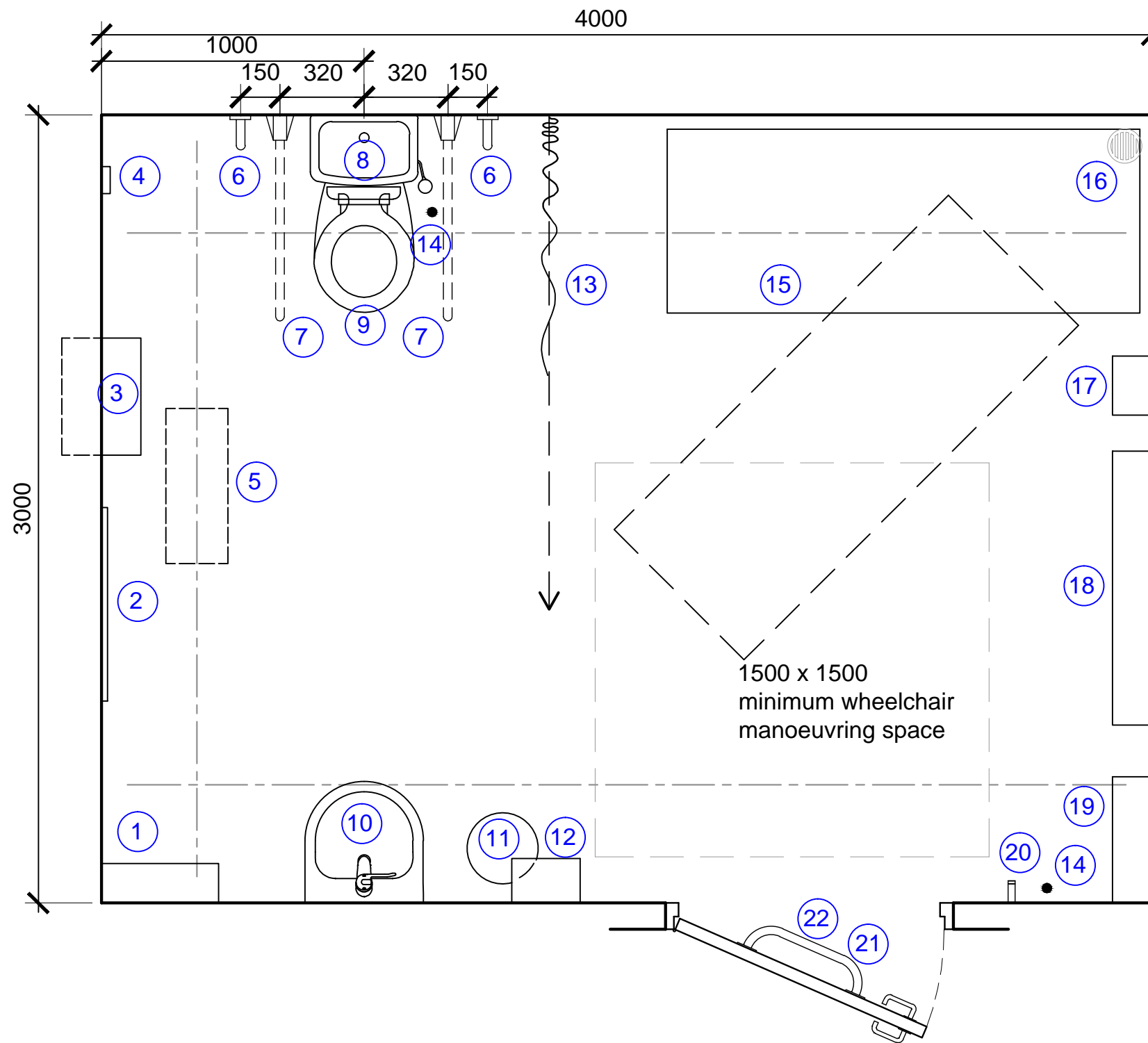
Notes:

This drawing is an extract from Sport England's Design Guidance Note 'Accessible Sports Facilities' and must be read in conjunction with the respective section of the guidance note

DO NOT SCALE FROM THIS DRAWING
ALL DIMENSIONS ARE IN MILLIMETRES

[Click here for 'Design and Cost Guidance'](#)

[Click here for 'User Guide'](#)



Key:

1. Paper towel dispenser
2. Mirror 1500mm high, located 600mm above floor level
3. Large sanitary disposal bin, if possible recessed into the wall
4. Alarm reset button
5. Full room cover tracked hoist system
6. Fixed vertical grab rail
7. Drop-down support rails, one with a toilet roll holder
8. Flat-topped close-coupled cistern providing a back rest and a colostomy changing surface for standing users (where high or low level cisterns are used, a rail with a padded back rest and a separate colostomy changing shelf 125 mm to 150 mm deep and preferably 400 mm wide, with its surface 950 mm above floor level, should be provided)
9. Peninsular WC (see Figure 55 of BS8300 for the location of associated fittings)
10. Large power-assisted height-adjustable washbasin
11. Waste disposal bin
12. Manually-operated hand dryer
13. Retractable privacy curtain / screen
14. Alarm pull cord
15. Height-adjustable showering / changing bench, min. 1800 mm long
16. Floors laid with simple falls to flush gully or grating
17. Shower unit
18. Wide paper roll dispenser for use on the changing bench
19. Sanitary towel dispenser
20. Two clothes hooks, one at 1050 mm and the other at 1400 mm above the floor
21. The doorway should comply with BS8300 requirements
22. Horizontal door pull to enable door to be closed when entering

NOTE:

Details of common features of sanitary accommodation are described in 12.2 and accessories related to toilets in 12.6.6 of BS8300. Advice on particular products is available from the Changing Places Consortium (see Appendix of Sport England's Design Guidance Note 'Accessible Sports Facilities').