

Scale: 1:20 @ A3

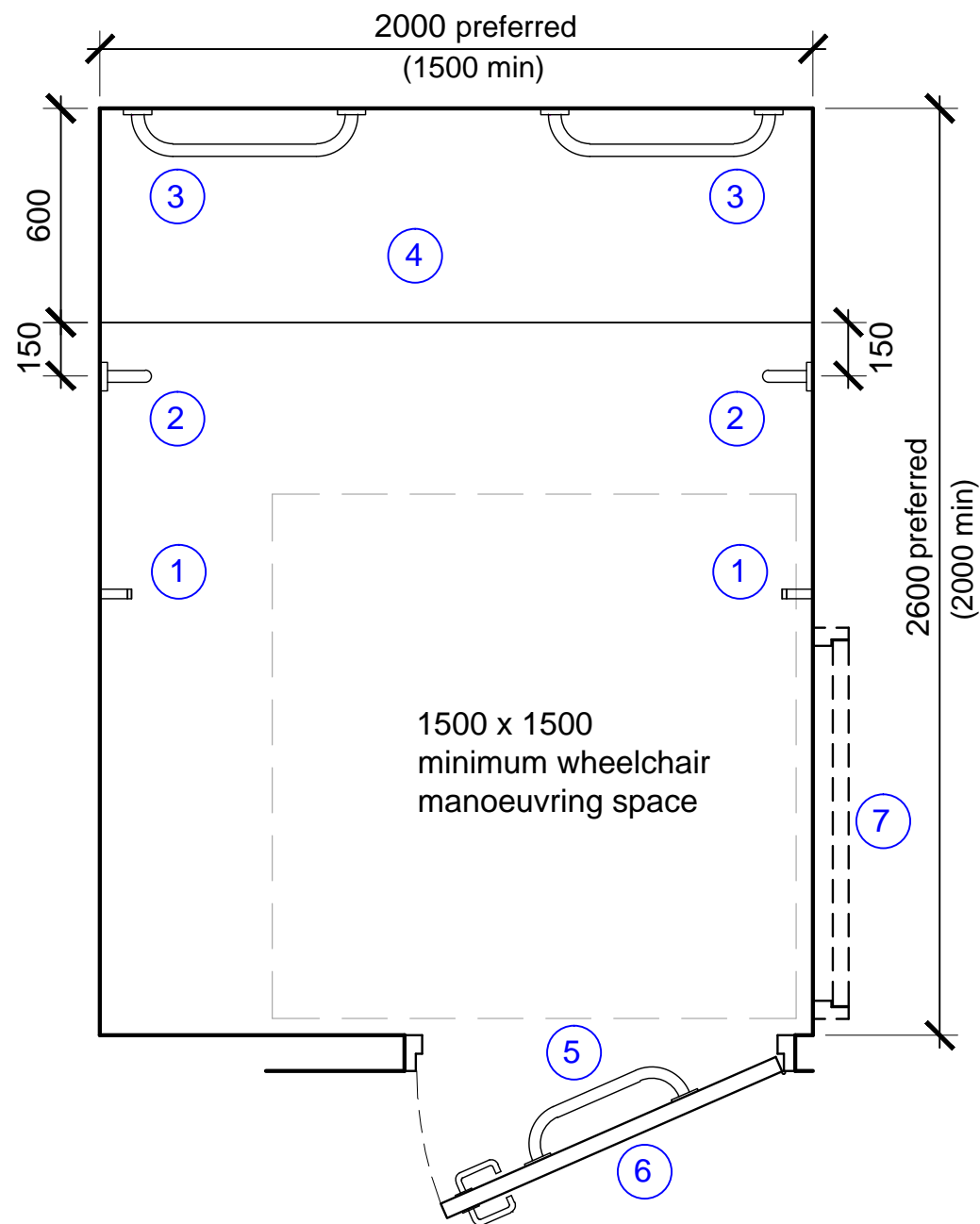
Notes:

This drawing is an extract from Sport England's Design Guidance Note 'Accessible Sports Facilities' and must be read in conjunction with the respective section of the guidance note

DO NOT SCALE FROM THIS DRAWING
ALL DIMENSIONS ARE IN MILLIMETRES

[Click here for 'Design and Cost Guidance'](#)

[Click here for 'User Guide'](#)



Key:

1. Two clothes hooks set at 1400mm and 1050mm above finished floor level
2. 600mm vertical grab rail securely fixed to side wall and set 800mm from floor level to the bottom of the rail
3. 600mm long horizontal grab rail securely fixed to back wall and set 680mm above finished floor level
4. 600mm deep cantilevered changing bench set at 480mm above finished floor level
5. Horizontal door pull to enable door to be closed when entering
6. Door to achieve minimum clearance requirement of 875mm
7. Alternative door position