

Accessible shower cubicle incorporated into main shower cubicle area

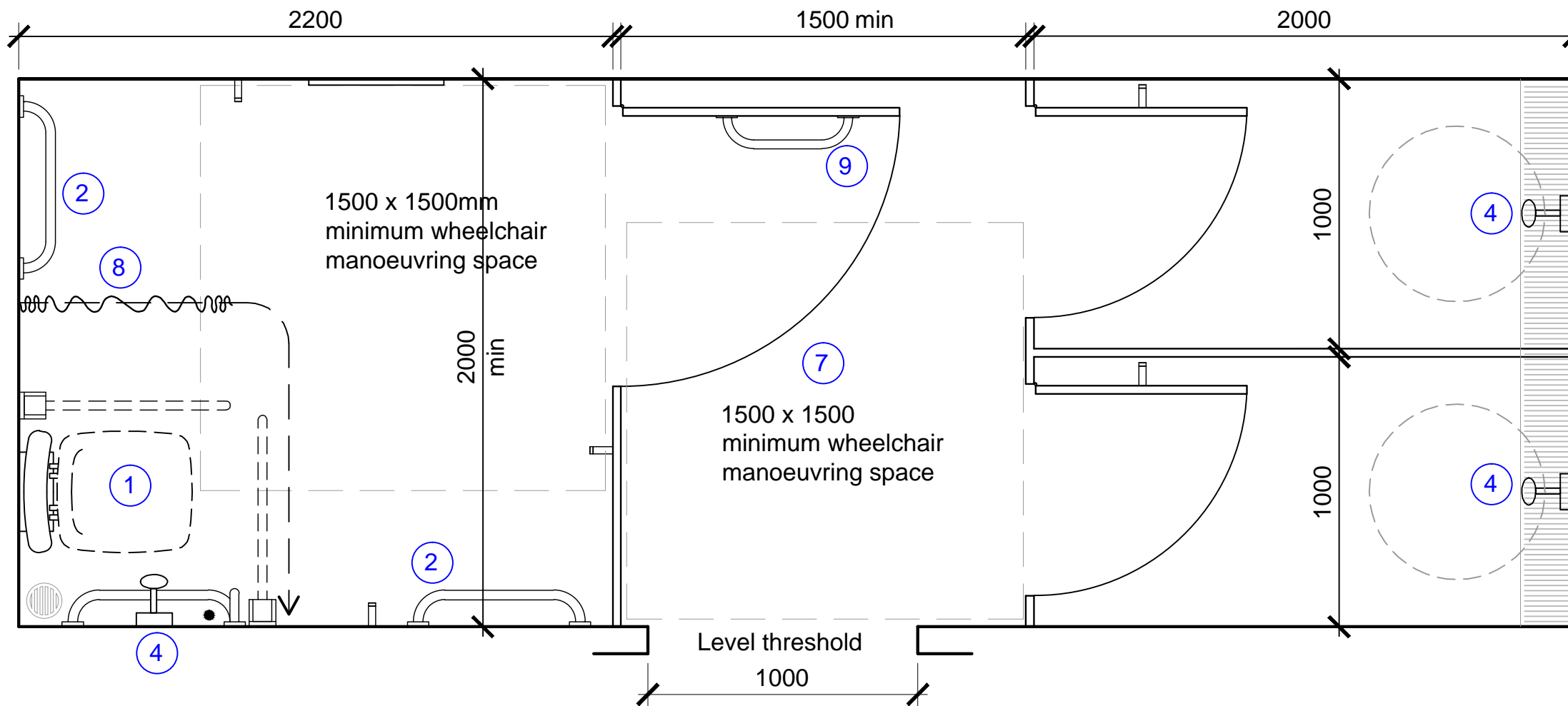
Fig.23

Scale: 1:20 @ A3

Notes:
 This drawing is an extract from Sport England's Design Guidance Note 'Accessible Sports Facilities' and must be read in conjunction with the respective section of the guidance note
 DO NOT SCALE FROM THIS DRAWING
 ALL DIMENSIONS ARE IN MILLIMETRES

[Click here for 'Design and Cost Guidance'](#)

[Click here for 'User Guide'](#)



Key:

1. 500 x 500mm tip-up shower seat set in corner with grabrail set on shower head wall
2. 600mm long horizontal grabrail providing additional support and can be used as towel rail
3. Towel hooks set at alternate heights of 1400 and 1050mm
4. Shower controls set at 1000mm above floor level with two shower heads at 1400 and 1800mm above floor level
5. Note: Where practicable, provide a privacy curtain, drop-down grabrail and emergency pull-cord with two red triangles
6. N/A
7. Dry-off area with slip resistant surface laid to simple falls
8. Shower curtain and rail
9. Door to achieve minimum requirement of 875mm clear

Refer to the Sport England's Design Guidance Note 'Accessible Sports Facilities' Figure 21 for typical elevation of an accessible shower wall.