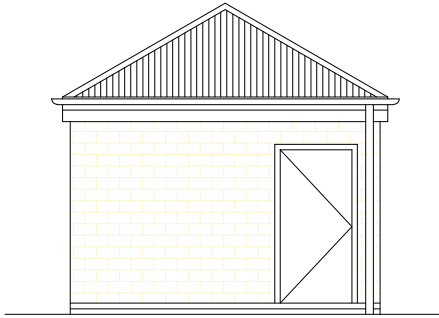
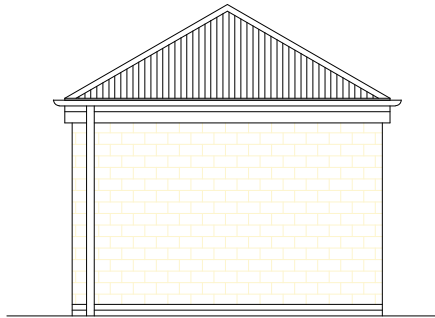


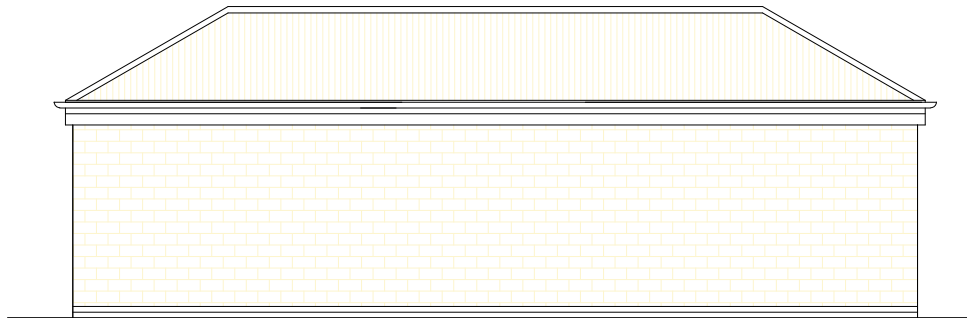
Front Elevation 1 Team Football and Rugby changing room



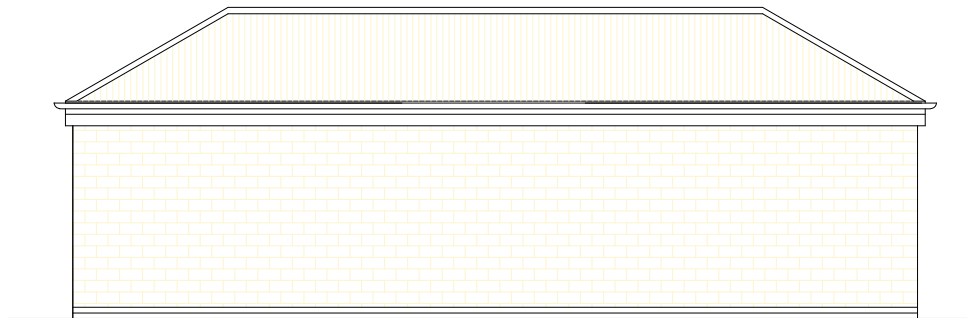
Rear Elevation 1 Team Football and Rugby changing room



Side Elevation 1 Team Football and Rugby changing room



Side Elevation 1 Team Football and Rugby changing room



Rev_00

Note:

This drawing is an indicative layout to show the principles for general arrangement and relationship of spaces. Refer to Sport England / NGB design guidance for further information.

Outline external finishes specification

- Clay interlocking tiles fixed via battens and roofing felt to timber trussed rafters at 450mm centres. Roof void insulated with quilt.
- uPVC 1/2 round rainwater gutter and round downpipe fixed to timber fascia and soffit. Fascia and soffit to be gloss paint finish.
- External cavity brickwork wall construction with insulated cavity and brick or facing blockwork external wall finish.
- DPC to be formed with 2 course of Class B blue engineering bricks or similar.
- External doors and windows to be in accordance with Building Regulations Part L & Sport England's Design Guidance Note - Accessible Sports Facilities.

